



fs.factory Version 2.11.00

User Manual

(C) Derek Cook 2006-2023

www.xfactory-librarians.co.uk

Table of Contents

<u>What's New in fs.factory V2.11.00 (10/09/2023)</u>	1
<u>Previous Versions</u>	1
<u>V2.10.01 (20/12/2022)</u>	1
<u>V2.10.00 (08/05/2022)</u>	1
<u>V2.9.02 (05/07/2020)</u>	1
<u>V2.9.01 (28/04/2020)</u>	1
<u>V2.9.00 (18/04/2020)</u>	1
<u>fs.factory V2.8.05 (22/12/2018)</u>	1
<u>V2.8.04 (22/10/2017)</u>	1
<u>V2.8.03 (13/08/2017)</u>	2
<u>What's New in fs.factory V2.8.02 (08/07/2017)</u>	2
<u>V2.8.01 (24/12/2016)</u>	2
<u>V2.8.00 (25/07/2016)</u>	2
<u>V2.7.00 (28/03/2016)</u>	2
<u>V2.6.00 (28/06/2014)</u>	2
<u>V2.5.00 (27/08/2012)</u>	2
<u>V2.4.00 (23/08/2012)</u>	2
<u>V2.3.00 (19/01/2012)</u>	2
<u>V2.2.02 (07/11/2011)</u>	2
<u>V2.2.01 (29/10/2011)</u>	2
<u>V2.2 (11/08/2011)</u>	2
<u>V2.1.00 (02/07/10)</u>	2
<u>V2.0.02 (22/12/09)</u>	3
<u>V2.0.01 (16/12/2009)</u>	3
<u>V2.0.00 (23/11/2009)</u>	3
<u>V1.1.00 (20/08/2007)</u>	3
<u>V1.0.00 (26/06/2006)</u>	3
<u>Installation and Configuration of fs.factory</u>	4
<u>Installing MIDI Extensions for MacOS X</u>	4
<u>Registering fs.factory</u>	5
<u>Running fs.factory</u>	6
<u>PC</u>	6
<u>MAC OS X</u>	6
<u>Command Line</u>	6
<u>The fs.factory Window</u>	7
<u>Menu Bar</u>	8
<u>Main Menu Headings</u>	8
<u>The File Menu</u>	9
<u>New ...</u>	9
<u>Open ...</u>	9
<u>Save</u>	9
<u>Save As ...</u>	9
<u>Save All</u>	9
<u>Open Workspace ...</u>	9
<u>Save Workspace ...</u>	9
<u>Export to</u>	9
<u>Exit</u>	10
<u>The Edit Menu</u>	11
<u>Undo</u>	11
<u>Redo</u>	11
<u>Clear Undo Buffer</u>	11
<u>Cut</u>	11
<u>Copy</u>	11
<u>Paste</u>	11
<u>Find ...</u>	11
<u>Find Next</u>	11
<u>Find Category ...</u>	11
<u>Find Next Category</u>	11
<u>Goto ...</u>	11
<u>The View Menu</u>	12
<u>Tool Bar</u>	12
<u>Status Bar</u>	12
<u>No Split</u>	12
<u>Horizontal Split</u>	12
<u>Vertical Split</u>	12
<u>Tree</u>	12
<u>Table</u>	12

Table of Contents

<u>The fs.factory Window</u>	
Refresh	12
Preferences	12
The MIDI Menu	13
Import From MIDI	13
Export to MIDI	13
MIDI Router	13
MIDI Preferences	13
The Tools Menu	14
Master Patch List	14
Library Information	14
Batch Import to Library	14
Batch Import DX7 Patches	14
The Window Menu	15
Tile Horizontal	15
Tile Vertical	15
Maximise Windows	15
Restore Windows	15
Minimise Windows	15
View FS1R Synthesizer Data	15
View FS1R Library	15
The Help Menu	16
Search	16
Get Help on fs.factory	16
View Tips and Tricks for fs.factory	16
View PDF Documentation for fs.factory	16
View License Agreement for fs.factory	16
View License Agreement for fs.factory	16
About fs.factory	16
Register and Activate fs.factory	16
Tool Bar	17
Desktop	18
Child Window	19
Tree View	20
Table View	21
FS1R Synthesizer Window	22
FS1R Library Window	23
FS1R Library Table View Columns	23
Table Sorting	23
Data Export	23
Table Filtering	24
Table Filter Controls	24
Table Filter Configuration	24
Status Bar	25
<u>Program Features</u>	26
File Operations	27
Create New File	28
Open Existing File	29
Save Open Files	30
Workspaces	31
Export Data	32
HTML	32
XML	32
Cubase VST Patch Script	32
Protools Patch Script	32
Sonar Patch Script	32
SpreadSheetML	32
Undo Buffer	34
Clipboard Support	35
MIDI Support	36
Configuring MIDI Support	36
Copying/Moving Voices and Performances	36
MIDI Keyboard Routing	37
Library Support	38
Configuring the Library	38
Adding Objects to The Library	38
Copying Objects From The Library	38
Deleting Objects From The Library	38
Exporting Voices and Performances From The Library to the FS1R	38
Extracting Files from the Library	38

Table of Contents

Program Features	
List File Usage	38
New Author	39
Library Information	39
Find and Goto Facilities	40
Find Dialog	40
Find Category Dialog	40
Goto Dialog	41
Editing Features	42
General Editing Features	43
Copy/Move Object	44
Initialise Object	44
Rename Object	44
Insert Object	45
Delete Object	45
List Object References	45
Sort Objects	46
Synth Editing Features	47
Voice Editing Features	48
Import from FS1R Memory	48
Export to FS1R Memory	48
Import from FS1R Memory by Manual Dump	48
Import from FS1R Edit Buffer	49
Export to FS1R Edit Buffer	50
Voiced Operator Editing Features	50
Unvoiced Operator Editing Features	50
Performance Editing Features	52
Import from FS1R Memory	52
Export to FS1R Memory	52
Import from FS1R Memory by Manual Dump	52
Import from FS1R Edit Buffer	53
Export to FS1R Edit Buffer	53
Performance Part Editing Features	53
Performance Effects Editing Features	55
Performance Controller Editing Features	55
Performance Formant Sequence Editing Features	55
System Settings Editing Features	56
Master Patch List	57
Generating The Cubase Master Patch List	57
Configuring Cubase to Use the Master Patch List	58
Library Statistics	58
Batch Import To Library	58
Select Source Directory Page	59
Select Destination Directory Page	59
Using the Batch Importer	60
Batch Import DX7 Files	61
Select Source Directory Page	61
Select Destination Directory Page	62
Using the Batch Importer	62
Preferences	64
Performance Preferences	65
Check Preferences	66
Default View Preferences	67
MIDI Preferences	68
Library Preferences	70
Miscellaneous Preferences	72
Online Help	73
Context Sensitive Help	74
Tips and Tricks	75
List of Tips and Tricks	75
Double Clicking a voice	75
Library Support	75
MIDI Support	75
Context Sensitive Help	75
Keyboard Shortcuts	75
Object Colouring	75
Table Sorting	75
DX7/DX7II Data Import	76

Table of Contents

Tips and Tricks

You can only DRAG COPY Certain Objects	76
Copying/Moving Performances to a Different File	76
MIDI Router	76
Master Patch List	76
Workspaces	76
Moving Voices within a File	76
The FS1R Synthesizer Window	76
Exporting Cubase/Protools Patch Lists	76
The Number After An Operator	76
Exporting Files to MIDI	77
Importing Files from MIDI	77

<u>About fs.factory</u>	78
--------------------------------	-----------

<u>Glossary</u>	79
------------------------	-----------

<u>Keyboard Short Cuts</u>	80
-----------------------------------	-----------

Keyboard Shortcuts for the Desktop and Child Windows	80
Keyboard Shortcuts for Tree Views	81
Keyboard Shortcuts for Table Views	82
Keyboard Editing Short Cuts for both Tree and Table Views	83
Keyboard Shortcuts for the Preferences Dialog	84
Keyboard Shortcuts for Text Editing Fields	84

<u>Credits</u>	85
-----------------------	-----------

3rd party software used in fs.factory	85
CoreMIDI4J License	85
Table Filter License	85
Apache Derby License	85
Apache Log4J License	85
Dom4J License	85
Java Wizard License	85

<u>fs.factory License</u>	86
----------------------------------	-----------

Disclaimer	86
Licensing Conditions for 3rd party software	86
Apache Derby License	86
Apache Log4J License	86
CoreMIDI4J License	86
Dom4J License	86
Java Wizard License	86
Table Filter License	87
Tritonus License	87

What's New in fs.factory V2.11.00 (10/09/2023)

- Added the ability to do a manual import of data from the FS1r, which is about 12 times faster than the commanded import.
- Fixed a bug in the database view that was preventing selection of different database views.
- Fixed a bug in the open/save workspace function that was preventing Librarian Windows being saved/restored by the workspace file.

Previous Versions

V2.10.01 (20/12/2022)

- Fixed a bug in drag and drop (most noticeable in kronos.factory and montage.factory due to file sizes) where drag and drop operations were occasionally failing and providing an error message about copy and paste not being possible.
- Fixed a bug where using the View/Refresh menu option killed drag and drop.
- Updated the status bar's file name display to show a truncated path (with the filename fully visible) if the full path will not fit in the available space.

V2.10.00 (08/05/2022)

- Updated how the applications are built. The Java Runtime is now embedded and updated to Java 17 as the minimum version. There is no longer a need for a standalone version of Java to be installed
- New installers for OS X (DMG), PC (MSI) and Linux (DEB) and basic ZIP and TAR packages.
- The OS X DMG package is notarized for compatibility with the OS X security model.

V2.9.02 (05/07/2020)

- Fixed problem on OS X Mojave and Catalina which was preventing access to protected folders.

V2.9.01 (28/04/2020)

- Fixed a bug with the default library path that was creating a new library under the main library.
- Introduced the Preferences option to allow the library path to be set.

V2.9.00 (18/04/2020)

- If you double click on a voice or performance, it will be sent to the synth's edit buffer. If you use a triple click action instead on a performance, the MIDI router is automatically opened after the performance is exported (note this triple click does not work on voices as you need to first confirm the voice edit buffer which stops a triple click from being detected).
- The application now supports MIDI data logging to the application log, which can be enabled in the Preferences/Misc Tab. It is recommended that this is not normally turned on, and it is only needed when required to help me diagnose any MIDI issues that are reported if you are experiencing any such issues.
- The Minimum Java Version is now Java 11, and I have rebuilt the applications with the latest support libraries. The migration to Java 11 is a significant step, as I have been help back from migrating to Java 9 and above due to Java PC MIDI issues that were causing garbled MIDI port names, which made it impossible to select MIDI ports. These issues are now resolved in the recommended JREs. Please see the [Java Support](#) page on the website for more details.
- The applications support iMac Retina displays.

fs.factory V2.8.05 (22/12/2018)

- No functional changes. The Application is now built using new build tools and libraries, as some of the ones I was using were obsolete and no longer supported. I am changing these as part of longer time migration plans to Java 9 and above.
- The Minimum Java Version is now Java 8, as Java 7 as Oracle no longer provide public updates to Java 7.

V2.8.04 (22/10/2017)

- OSX Users - Updates to how devices are named in CoreMIDI4J to provide better device identification, which means that you may need to reselect your devices in MIDI Preferences as they may now be named differently.
- OSX Users - I've finally figured out how to get rid of the confusing default drag image that OS X adds on top of the drag images that I am generating.
- Small GUI update to change background colour of object selections (the default colours since Java 7 are not good).

V2.8.03 (13/08/2017)

- Further improvements to error logging.

What's New in fs.factory V2.8.02 (08/07/2017)

- General improvements in MIDI report handling to report identified port issues to the user.
- When importing many items and MIDI timeouts are being experienced, then you now have the option to abort or continue the transfer
- Fixed bug in the database that prevented the author being correctly displayed when it was being edited, and added context menu options to allow multiple objects to have the Author value edited at the same time.
- Added application error logging to make debugging easier.

V2.8.01 (24/12/2016)

- Improved database access performance when editing information.

V2.8.00 (25/07/2016)

- CoreMidi4J is now embedded in the application for OS X Users. So there is no longer a need to download and install a MIDI Service Provider extension for OS X.

V2.7.00 (28/03/2016)

- Updated all x.factory Librarians to use CoreMID4J on Mac OSX.
- Updated all x.factory Librarians to use Launch4J application launcher on PC.
- The minimum JRE version is now Java 7.

V2.6.00 (28/06/2014)

- Updated all x.factory Librarians to use a new automated licensing system.

V2.5.00 (27/08/2012)

- Updated MIDI Router to allow the MIDI Channel to be either the channel sent by the source device, or to be the channel specified in the **MIDI Options Dialog**.

V2.4.00 (23/08/2012)

- Updated application to work with MMJ on OS X to provide access to external MIDI devices. The move to MMJ is required because the Mandolane MIDI SPI is no longer supported and doesn't work on OS X Lion and above.
- The MIDI Router is now available on the MIDI Menu.

V2.3.00 (19/01/2012)

- Updated Java Launcher to work on OSX Snow Leopard and OSX Lion.

V2.2.02 (07/11/2011)

- Updated Windows Installer to detect 32 or 64 Java Runtime Environments (JREs) and to configure the application launcher to make use of a 64 bit JRE if available.
- Fixed bug that was preventing the selection of Table Views if the application was not registered

V2.2.01 (29/10/2011)

- Fixed a bug that was not allowing Files in the Library to have the Author parameter set.

V2.2 (11/08/2011)

- Batch importer for importing FS1R SYSEX and MIDI bulk dump files into the Library
- MIDI Bulk Dump files (embedded SYSEX) are now preserved, not converted to SYX
- You can now create SYSEX or MIDI file types
- "Save As" allows you to change the file type
- The default view in a Table is now Performances, as I felt that this is more logical given that this is the main FS1R operating mode.
- There is now a preference settings to indicate if files should be created with a System node

V2.1.00 (02/07/10)

- Added the DX7 batch file import wizard.

- Fixed problem with DX7 Import that rejected a lot of files due to checksum errors.

V2.0.02 (22/12/09)

- Added "User Formant Sequences" check box to the "Misc Options" Preferences Tab. When this is checked, fs.factory will only send and receive the first 64 user voices.
- Increased MIDI buffer size maximum limit to 8,192 bytes.

V2.0.01 (16/12/2009)

- Corrected problem where file data paths on non-English locales were not being found.
- Updated license code to allow fs.factory to unpack a license.zip if it is found in the license folder, which simplifies installation particularly for Mac OSX users, where the standard zip extractors were causing problems with the license file. fs.factory can also now detect a license.lic file if this has been inadvertently extracted.

V2.0.00 (23/11/2009)

- Library support has been added, which allows you to keep all of your favourite items (Voices and Performances) in one Library database, and then sort and filter them to find the patch that you want. This feature is only available for [registered users](#).
- fs.factory can now read MIDI (.MID) files with embedded FS1R SYSEX data and create a SYSEX data file from the MID file.
- You can create a performance bank to match a voice bank in a file.
- Improved DX7 import to correct bug with the creation of performances from DX7II performances, and performances are now automatically created if the file being imported (DX7 or DX7II) doesn't have any defined.

V1.1.00 (20/08/2007)

- fs.factory can now bulk convert DX7 and DX7II SYSEX files. The FS1R itself can only convert voice edit buffer SYSEX data.

V1.0.00 (26/06/2006)

- First release.

Installation and Configuration of fs.factory

fs.factory is downloaded as a self installing file, so installation is automatic, and for most users little else, if anything, needs to be done to get up and running.

A native installer for Windows is also available.

This section is only relevant to installing additional items not included as part of the fs.factory installer.

Installing MIDI Extensions for MacOS X

If you wish to use the MIDI support provided on Mac OSX, then a Java MIDI Service Provider extension is required.

The extensions provide MacOS X Java programs access to all CoreMIDI devices

An extension is required because, historically, the Java implementation on OS X is not able to access external MIDI devices. Apple/Oracle claim to have fixed the external MIDI device access problem in its Java implementation. However, it appears that only "simple" MIDI messages are now supported. SYSEX data transfer (essential for transferring synth data) is not supported.

fs.factory now embeds CoreMIDI4J in the application package, so you no longer need to download and install it separately. However, if you still require an SPI for other Java MIDI software then you will need to ensure that you have the latest compatible version of CoreMIDI4J, as if an SPI is installed in the /Library/Java/Extensions folder then this will override the version of CoreMIDI4J embedded in fs.factory.

If you are not using any other Java software that requires MIDI access, it is best to remove any existing version of CoreMIDI4J from the /Library/Java/Extensions folder so that fs.factory can access the CoreMIDI4J version embedded in the package. That way you can ensure that fs.factory is always using the latest compatible version of CoreMIDI4J.

fs.factory will warn you if it detects an earlier version of CoreMIDI4J. It will still function, but will not benefit from recent CoreMIDI4J bug fixes or enhancements.

If you need to retain a version of CoreMIDI4J in the /Library/Java/Extensions folder then you can always download the latest version of CoreMIDI4J.jar from [CoreMIDI4J Releases](#)

Once you have downloaded CoreMIDI4J.jar it needs to be copied to the /Library/Java/Extensions folder. You will need to provide administrator permissions to copy the files.

Once installed, when running the librarians and selecting the MIDI ports to use, select the ports prefixed with **CoreMIDI4J -**. For example my Edirol UA-25 interface that I use for testing on OS X is listed as **CoreMIDI4J - UA-25**. The latest version of fs.factory will only list CoreMIDI4J devices.

Registering fs.factory

You need to register fs.factory to allow MIDI data to be exported to the FS1R, for data to be saved to your computer and for [Library Support](#) to be enabled.

Please refer to the [x.factory Librarian Registration Page](#) for details on how to register fs.factory.

Running fs.factory

Starting up fs.factory is as simple as starting any application, simple double click on the icon and you're away.

If you have [registered](#) fs.factory, then the Library will be created (if it doesn't already exist) and opened.

During start-up, a "Splash Screen" is shown. This stays visible until a few seconds after the program has loaded and is ready for use, but can be dismissed at any time by clicking on the Splash Screen.

fs.factory remembers the size and position of the main window between sessions, so the main window will be sized and positioned as you left it the last time.

PC

Simply double click on the program icon for the program either in an Explorer shell, or from the desktop if you let the installer place a shortcut there.

You can also select the program from the **Start Menu**. By default, fs.factory can be found under the **x.factory Librarians** Program Group.

IMPORTANT NOTE: If the application is failing to launch on a PC with a 32 bit version of Windows, then please read the Section on adjusting the [JRE Memory Configuration](#), as the failure is more than likely to be due to an out of memory condition.

MAC OS X

Navigate to the **Applications** folder in **Finder** and double click the fs.factory application.

You can also create "**Aliases**" of the application and place them anywhere you wish, such as on the desktop

To make an alias you can choose any one of the following methods:

- Click the fs.factory item you have just identified and hold down the mouse button. Then, while holding down the **Command** and **Option** keys simultaneously, drag the item to where you want the alias to appear then let go of the mouse button and finally release the two keys. This will create an alias at your desired location. While dragging, the 'ghosted' item will display a shortcut arrow which will remain on the aliased icon when it has been created.
- Hold down the **Ctrl** key, and then click the fs.factory item as identified previously. The context menu will be displayed, and one of the choices will be **Make Alias**. Click that option, and then release the key. The fs.factory alias will appear next to the original item and can be dragged to your location of choice.
- Select the fs.factory item you identified previously by clicking it once then press **Command-L** (lowercase L). The fs.factory alias will appear next to the original item and can be dragged to your location of choice.
- Click the fs.factory item once to select it, and then from the **File** menu, select **Make Alias**. The fs.factory alias will appear next to the original item and can be dragged to your location of choice.

Note that if your alias does not have a small arrow in the lower left corner then you have not correctly created an alias and have probably just dragged the application launcher to a new location. If so, drag it back to the Application folder and start again.

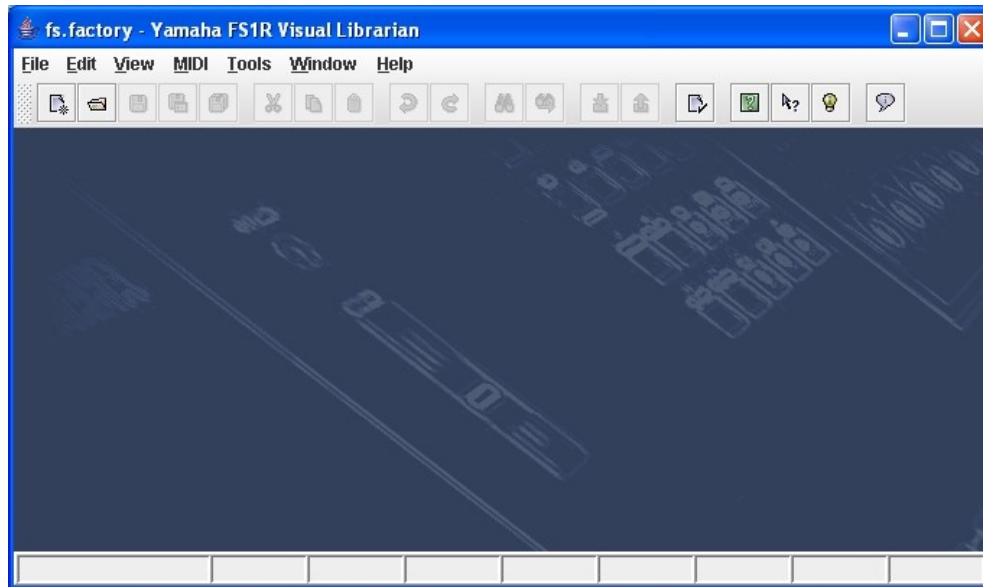
Command Line

You can also startup fs.factory from a command shell (e.g. MsDOS). Simply change directory to where fs.factory is located and type the following:

```
java -jar fsfactory.jar
```

The fs.factory Window

The main fs.factory window looks like this



The fs.factory user interface is a Multiple Document Interface (MDI), which allows you to have more than one file open at a time.

The interface is divided into the now familiar layout of (from top to bottom):

- The Title Bar
- The [Menu Bar](#)
- The [Tool Bar](#)
- The [Desktop](#)
- The [Status Bar](#)

Menu Bar

The fs.factory menu bar provides a means of selecting common operations; typically those that affect a complete file, or those that don't fit naturally upon a context sensitive popup menu.

[Keyboard Shortcuts](#) are provided for common operations.

fs.factory also provides context sensitive popup menus, which are accessible by right clicking over data shown in a [Child Window](#). Naturally the contents of the popup menus varies according to the type of data over which the menu was popped up.

Main Menu Headings

The following menu headings are available.

File Edit View MIDI Tools Window Help

- [File Menu](#)
- [Edit Menu](#)
- [View Menu](#)
- [MIDI Menu](#)
- [Tools Menu](#)
- [Window Menu](#)
- [Help Menu](#)

The File Menu

The **File** menu provides the following options:

New ...	Ctrl-N
Open ...	Ctrl-O
Save	Ctrl-S
Save As ...	Ctrl-A
Save All ...	Ctrl-L
Open Work Space...	Ctrl+Alt-O
Save Work Space ...	Ctrl+Alt-S
Export to	▶
Exit	
1: C:\FS1R\Voices\CYBER.SYX	
2: C:\FS1R\Voices\POPULAR.SYX	
3: C:\FS1R\Voices\FSWorldColl.SYX	
4: C:\FS1R\Voices\VoiceTest.syx	

New ...

Shows the [New File](#) Dialog, which allows you to create a new file.

Open ...

Shows the [Open File](#) Dialog, which allows you to open a specified file.

Save

Saves a file using its current name.

If the file in question is a newly created file, then the [Save File](#) Dialog is brought up to allow a name to be entered.

This option is only enabled if your copy of fs.factory is [registered](#).

Save As ...

Saves the selected file after a name has been entered in the [Save File](#) Dialog.

This option is only enabled if your copy of fs.factory is [registered](#).

Save All

Saves all open files that have been modified using their current names.

This option is only enabled if your copy of fs.factory is [registered](#).

Open Workspace ...

This option allows you to select a previously saved [Workspace](#), which is a Collection of open windows, and the size and positions within the main fs.factory window.

When you select this option, a dialog opens which allows you to select an fs.factory workspace file (EXW).

Save Workspace ...

This option allows you to save the current size and position of the main fs.factory window, and the arrangement of the open windows within fs.factory to a [Workspace](#) file.

This option is only enabled if your copy of fs.factory is [registered](#).

Export to

This option brings up the following sub menu:

HTML ...
XML ...
Cubase Patch Script ...
Protools 6 Patch Script ...
Sonar Patch Script ...
SpreadSheetML ...

These options allow you to [Export](#) the data in the currently selected file to a variety of different formats. This option is only enabled if your copy of fs.factory is [registered](#).

Exit

Exits the fs.factory application.

If any files have been modified and have not been saved, you will be given the option of saving them.

The Edit Menu

The **Edit** menu provides the following options:

 Undo	Ctrl-Z
 Redo	Ctrl-Y
Clear Undo Buffer	
 Cut	Ctrl-X
 Copy	Ctrl-C
 Paste	Ctrl-V
 Find ...	Ctrl-F
 Find Next	F3
Find Category ...	Ctrl+Shift-F
Find Next Category	Shift-F3
Goto ...	Ctrl-G

Undo

Undos the previous edit stored in the [Undo Buffer](#).

Redo

Redos the next edit stored in the [Undo Buffer](#).

Clear Undo Buffer

Clears the [Undo Buffer](#).

Cut

Places a copy of the selected Object(s) onto the [Clipboard](#) and deletes the selected Object(s) from the file.

Copy

Places a copy of the selected Object(s) onto the [Clipboard](#).

Paste

Copies the Object(s) on the [Clipboard](#) into the highlighted location within the current file.

Find ...

fs.factory supports the ability to find Objects either by name or by category.

Searches start from the currently selected Object.

Selecting the **Find ...** option brings up the [Find](#) dialog, that allows you to specify the string to search for, along with options that can be used to refine the search.

Find Next

If you have defined the **Find** criteria within the **Find** dialog, then this option will repeat the search using the same criteria.

Find Category ...

You can also search by category by selecting **Find Category ...** option, which brings up the [Find Category](#) Dialog.

Find Next Category

If you have defined the **Find Category** criteria within the **Find Category** dialog, then this option will repeat the search using the same criteria.;

Goto ...

Selecting this option brings up the [Goto](#) Dialog, which allows you to quickly navigate to a numbered Object.

The View Menu

The View menu provides the following options:

<input checked="" type="checkbox"/> Tool Bar	<input checked="" type="checkbox"/> Tool Bar	<input checked="" type="checkbox"/> Tool Bar
<input checked="" type="checkbox"/> Status Bar	<input checked="" type="checkbox"/> Status Bar	<input checked="" type="checkbox"/> Status Bar
<input checked="" type="radio"/> No Split	<input type="radio"/> No Split	<input type="radio"/> No Split
<input type="radio"/> Horizontal Split	<input checked="" type="radio"/> Horizontal Split	<input type="radio"/> Horizontal Split
<input type="radio"/> Vertical Split	<input type="radio"/> Vertical Split	<input checked="" type="radio"/> Vertical Split
<input checked="" type="radio"/> Tree	Left Pane ▶	Top Pane ▶
<input type="radio"/> Table	Right Pane ▶	Bottom Pane ▶
Refresh	Refresh	Refresh
Preferences ...	Preferences ...	Preferences ...

Note how some of the options change depending on whether or not the [Child Window](#) is split.

When the [Child Window](#) is split the **Left/Top Pane** and **Right/Bottom Pane** menu options have the following sub menu.

<input checked="" type="radio"/> Tree
<input type="radio"/> Table

Tool Bar

When checked the fs.factory [Tool Bar](#) is visible.

Status Bar

When checked the fs.factory [Status Bar](#) is visible.

No Split

When checked the current [Child Window](#) is not split.

Horizontal Split

When checked the current [Child Window](#) is split horizontally.

Vertical Split

When checked the current [Child Window](#) is split vertically.

Tree

When checked the main/left/top pane in a [Child Window](#) displays data in a [Tree View](#).

Table

When checked the main/right/bottom pane in a [Child Window](#) displays data in a [Table View](#).

Refresh

Refreshes all open [Child Windows](#).


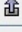
This command is provided in case the screen is not properly updated following an edit operation. There are a couple of odd bugs I cannot track down on screen updates. So if you come across them as well, then this command will force a redraw of the windows.

Preferences ...

Opens the fs.factory [Preferences Dialog](#).

The MIDI Menu

The MIDI menu provides the following options:

 Import FS1R Synthesizer Data from MIDI	
 Export FS1R Synthesizer Data to MIDI	
FS1R MIDI Router...	F12
MIDI Preferences ...	

Import From MIDI

Imports Voices and Performances from the FS1R via MIDI to the currently selected Window.

Export to MIDI

Exports Voices and Performances to the FS1R via MIDI from the currently selected Window.

Note: The **Export To MIDI** option is only enabled if you have [registered](#) fs.factory.

MIDI Router ...

Opens the [MIDI Router](#) Dialog which allows you to use another keyboard to audition FS1r Data.

MIDI Preferences ...

Opens the [Preferences](#) Dialog with the [MIDI Preferences](#) Tab active.

The Tools Menu

The **Tools** menu provides the following options:



Master Patch List ...

Opens the [Master Patch List](#) dialog.

This option is only enabled if your copy of fs.factory is [registered](#).

Library Information ...

Opens the [Library Statistics](#) dialog.

This option is only enabled if your copy of fs.factory is [registered](#).

Batch Import to Library ...

Opens the [Batch Import To Library](#) dialog.

This option is only enabled if your copy of fs.factory is [registered](#).

Batch Import DX7 Patches ...

Opens the [Batch Import DX7 Patches](#) Wizard.

This option is only enabled if your copy of fs.factory is [registered](#).

The Window Menu

The **Window** menu provides the following options:

Tile <u>H</u> orizontal	Ctrl+Alt+H
Tile <u>V</u> ertical	Ctrl+Alt+V
Maximise Windows	Ctrl+M
Restore Windows	Ctrl+R
Minimise Windows	Ctrl+I
<input type="checkbox"/> View FS1R Synthesizer Data	
<input type="checkbox"/> View FS1R Library	
CYBER.SYX	
FSWorldColl.SYX	

In the example given above, you'll see that after the predefined menu options there are menu options that allow you to select the windows currently open within fs.factory (FSWorldColl.SYX and CYBER.SYX in our example menu).

Tile Horizontal

Arranges all non-minimised [Child Windows](#) along the horizontal axis.

Tile Vertical

Arranges all non-minimised [Child Windows](#) along the vertical axis.

Maximise Windows

Maximises all [Child Windows](#) so they all occupy the size defined by the desktop.

Restore Windows

Restores all maximised/minimised [Child Windows](#) to their normal state.

Minimise Windows

Reduces all [Child Windows](#) to their iconised state.

View FS1R Synthesizer Data

Opens or closes the [FS1R Synthesizer Window](#) which provides a view on preset and user FS1R synth data.

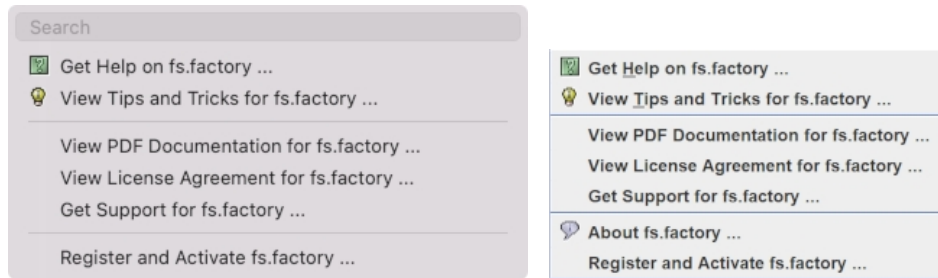
View FS1R Library

Note: This menu option is only visible if you have [registered](#) fs.factory.

Opens or closes the [FS1R Library Window](#) which provides a view on the FS1R Library.

The Help Menu

The **Help** menu provides the following options (OS X and Windows versions are shown):



Search

OS X only. This is a standard OS X Menu function currently not working with fs.factory. One day....

Get Help on fs.factory ...

Displays the fs.factory [Online Help](#) system.

View Tips and Tricks for fs.factory ...

Displays the fs.factory [Tips and Tricks](#) Dialog.

View PDF Documentation for fs.factory ...

Displays the PDF documentation for fs.factory. Note that there needs to be a registered viewer for PDF files on your system for this command to work

View License Agreement for fs.factory ...

Displays the fs.factory [License Agreement](#) in a dialog box.

View License Agreement for fs.factory ...

Provides a link to the [x.Librarian's Support Page](#).

About fs.factory ...

This menu option is not available if the host operating system is OS X. On OSX there is an **About fs.factory** menu option in the [fs.factory Application Menu](#).

Displays the fs.factory [About Dialog](#), which provides some basic information about the program, such as the version number.


















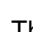
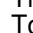
Register and Activate fs.factory ...

Displays the fs.factory registration and activation Dialog.

See the [Registration Section](#) for details of how to register fs.factory.

Tool Bar

The Tool Bar contains buttons for common operations, such as opening and saving files.

-  Creates a new file
-  Displays the [Open File](#) Dialog to allow you to select a file to open
-  [Saves](#) the currently selected file
-  Displays the [Save As](#) Dialog to allow you to select a different name for the currently selected file
-  [Saves](#) all the open files to disk
-  Cuts the selected Objects and places them on the [Clipboard](#)
-  Copies the selected Objects and places them on the [Clipboard](#)
-  Pastes the contents of the [Clipboard](#) to the current selection
-  [Undos](#) the previous edit
-  [Redos](#) the previous edit
-  Displays the [Find](#) Dialog to allow you to define the search criteria and then search for the first occurrence
-  Searches for the next occurrence of the search criteria defined in the [Find](#) Dialog
-  Imports Voices/Performances from the FS1R via the [MIDI](#) interface
-  Exports Voices/Performances to the FS1R via the [MIDI](#) interface
-  Displays the [Preferences](#) dialog where you can configure fs.factory
-  Displays the fs.factory [Online Help](#) index page
-  Enables [Context Sensitive](#) Help
-  Displays the [Tips and Tricks](#) Dialog
-  Displays the [About](#) Dialog

The Save and MIDI export buttons are only enabled if fs.factory is [Registered](#).

The Tool Bar can be dragged and made a floating toolbar by clicking and dragging the handle to the left of the Tool Bar.

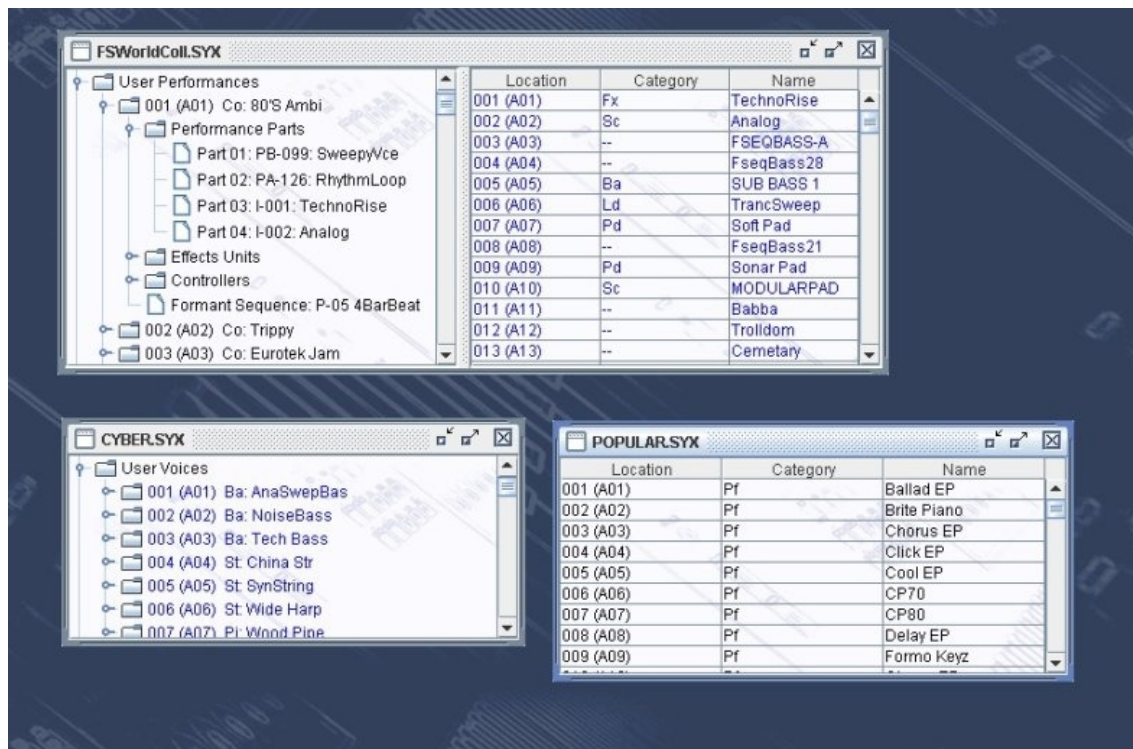
The Tool Bar can also be dragged to a different window border other than the top border.

The Tool Bar can be hidden/unhidden by the **Tool Bar** menu option on the [View](#) menu.

The Tool Bar whilst floating can be docked once more by closing it.

Desktop

The Desktop portion of the window is where the FS1R data is portrayed. Several files may be opened and shown within [Child Windows](#) upon the Desktop portion of the window. The following example shows three [Child Windows](#) open on the Desktop.



The [Window Menu](#) provides menu options to:

- Tile (either vertically or horizontally) all [Child Windows](#) that are not iconised
- Minimise all [Child Windows](#)
- Maximise all [Child Windows](#)
- Restore all [Child Windows](#)
- Select a specific [Child Window](#)
- Open the [FS1R Synthesizer Window](#)
- Open the [FS1R Library Window](#)

When a file is opened, a [Child Window](#) is added to the Desktop Area.

Child Window

The Child Window provides the **View** upon the data within the file it is associated with.

The Child Window is maximised by default when it is opened, and can be minimised, restored or closed by the buttons to the right of the Child Window's title bar.

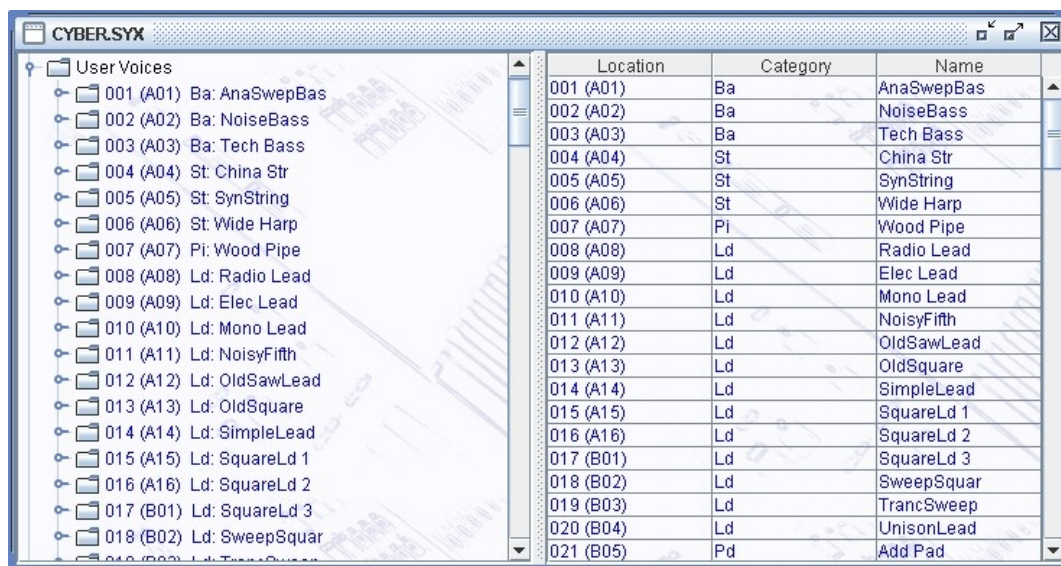
The menu options on the [View](#) menu can be used to change the View to a [Table](#) view, which can show either a Voice Table or a Performance table.

It's also possible to have either a horizontally or a vertically split View which can show any of the following combinations:

- A [Tree](#) and a [Table](#)
- A [Table](#) and a [Tree](#)
- Two [Trees](#)
- Two [Tables](#)

The default Child Window View applied when a file is opened is set in the [Default View Tab](#) of the [Preferences](#) Dialog.

The following example shows a Child Window that is split and showing both a [Tree View](#) and a [Table View](#) on the same data.



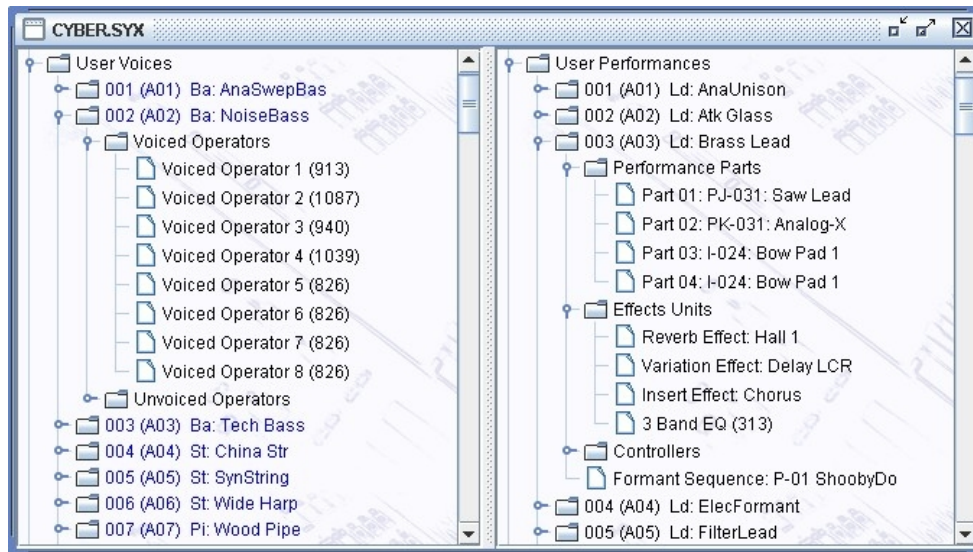
The [Tree](#) and [Table](#) views support drag [move](#) and drag [copy](#) operations, and the views will automatically scroll whilst drag operations are in progress.

fs.factory also provides two special Child Windows:

- The [FS1R Synthesizer](#) Window.
- The [FS1R Library](#) Window (This Window is only available if you have [registered](#) fs.factory).

Tree View

The **Tree View** shows the FS1R data as a hierarchical tree, and can show more information than the [Table View](#). The following example shows a split [Child Window](#) with two Tree Views.



Basically, information is shown as a set of hierarchical **Objects**. Objects may have children attached to them, and they themselves may have further child Objects (e.g. a Voice Object, has a child Object for its Voiced Operators, and this Object groups all the Voiced Operators of the Voice).

The basic tree structure is a **Root Object** at the top of the tree under which are various Object **Collections** which themselves contain further data.

You can double click on an item, and if the item is a voice or performance, it will be exported to the synth's Edit buffer

You can also triple click on an item, and if the item is a performance, it will be exported to the synth's Edit buffer and the [MIDI Router](#) will also be opened

Objects are displayed in one of two colours:

- Black if the Object is not referenced by another Object
- Blue if an Object is referenced by another Object (e.g. a Voice being used within a Performance)

The Tree View allows multiple Objects to be selected, which is useful for performing operations only upon certain Objects. You can only perform operations upon Objects of the same type.

If you wish to perform an operation upon all Objects in a Collection, simply select the Collection containing the Objects.

Table View

The Table View provides a more high level overview of the data than the [Tree View](#), and the representation of the data is more compact. The following example shows a [Child Window](#) with a single Table View providing information on a file's Voices.



Location	Category	Name
016 (A16)	Ld	SquareLd 2
017 (B01)	Ld	SquareLd 3
018 (B02)	Ld	SweepSquar
019 (B03)	Ld	TrancSweep
020 (B04)	Ld	UnisonLead
021 (B05)	Pd	Add Pad
022 (B06)	Pd	BeautyPad
023 (B07)	Pd	Big Sweep
024 (B08)	Pd	Bow Pad 1
025 (B09)	Pd	Bow Pad 2
026 (B10)	Pd	Church Pad
027 (B11)	Pd	China Pad
028 (B12)	Pd	Decay Pad
029 (B13)	Pd	Digi Pad
030 (B14)	Pd	Discreet

The Table View can only show one Collection of Objects at a time.

Currently the Table View can show Voices in SYSEX files or Performances in SYSEX files.

You can select whether a Table View shows Voices or Performances by right clicking within the table to access the context sensitive menu, upon which can be found menu options to select either a Voice Table or a Performance Table.

Each row within the table shows one Object.

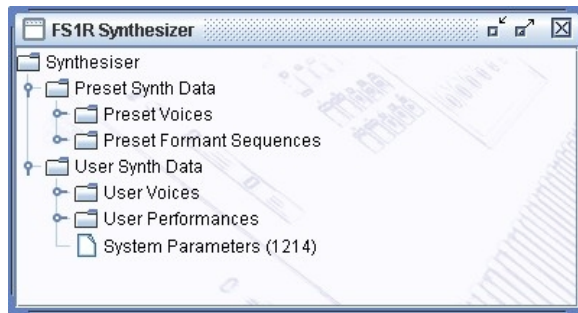
You can double click on a row, and if the item is a voice or performance, it will be exported to the synth's Edit buffer

You can also triple click on an row, and if the item is a performance, it will be exported to the synth's Edit buffer and the [MIDI Router](#) will also be opened

The Table View's context sensitive popup menus support editing operations. The cells in a Row that contain the Object's **Category** and **Name** can be directly edited by clicking in them.

FS1R Synthesizer Window

The FS1R Synthesizer Data Window is made visible by ensuring the **View FS1R Synthesizer Data** option in the [Window Menu](#) is checked.



This Child Window is a special View that shows the following FS1R **Preset and User Data Collections**:

- Preset Voices
- Preset Formant Sequences
- User Voices
- User Performances

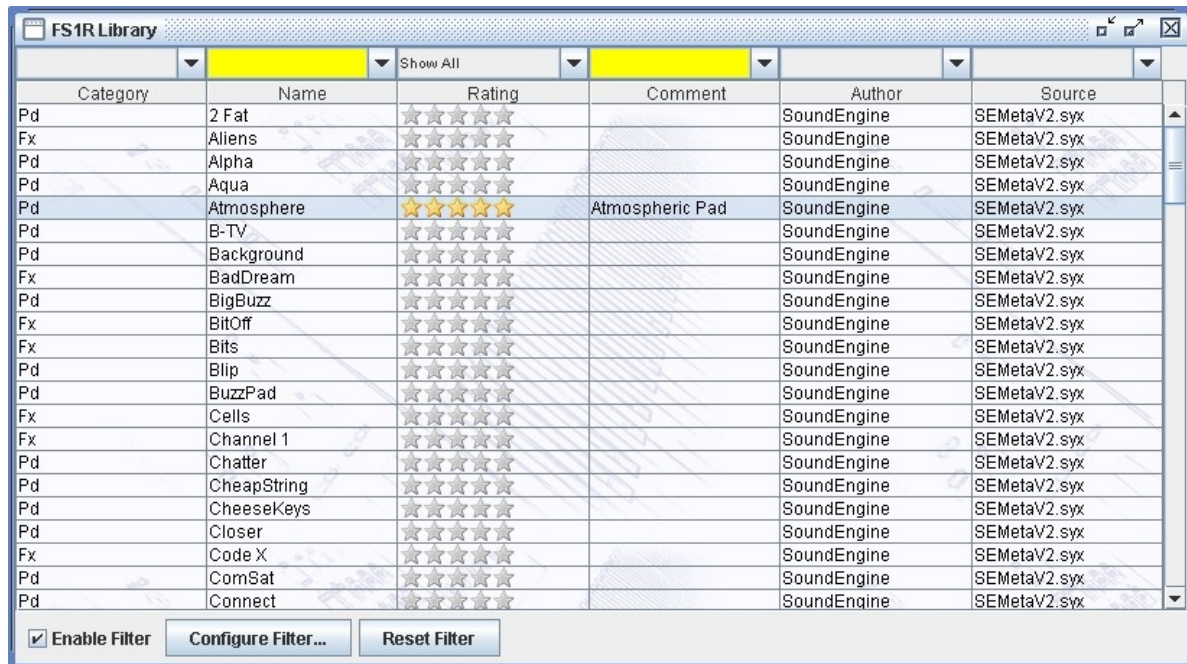
The purpose of showing these User Data Collections is to allow drag and drop transfers of User Voices and User Performances between fs.factory and the FS1R via the [MIDI Interface](#).

The Preset Voice and Formant Sequence data can be drag copied onto performance parts and performance formants to reference preset data.

FS1R Library Window

Note: This Window can only be opened if you have [registered](#) fs.factory.

The FS1R Library Data Window is made visible by ensuring that the **View FS1R Library** option in the [Window Menu](#) is checked.



Category	Name	Rating	Comment	Author	Source
Pd	2 Fat	★★★★★		SoundEngine	SEMetaV2.syx
Fx	Aliens	★★★★★		SoundEngine	SEMetaV2.syx
Pd	Alpha	★★★★★		SoundEngine	SEMetaV2.syx
Pd	Aqua	★★★★★		SoundEngine	SEMetaV2.syx
Pd	Atmosphere	★★★★★	Atmospheric Pad	SoundEngine	SEMetaV2.syx
Pd	B-TV	★★★★★		SoundEngine	SEMetaV2.syx
Pd	Background	★★★★★		SoundEngine	SEMetaV2.syx
Fx	BadDream	★★★★★		SoundEngine	SEMetaV2.syx
Pd	BigBuzz	★★★★★		SoundEngine	SEMetaV2.syx
Fx	BitOff	★★★★★		SoundEngine	SEMetaV2.syx
Fx	Bits	★★★★★		SoundEngine	SEMetaV2.syx
Pd	Blip	★★★★★		SoundEngine	SEMetaV2.syx
Pd	BuzzPad	★★★★★		SoundEngine	SEMetaV2.syx
Fx	Cells	★★★★★		SoundEngine	SEMetaV2.syx
Fx	Channel 1	★★★★★		SoundEngine	SEMetaV2.syx
Pd	Chatter	★★★★★		SoundEngine	SEMetaV2.syx
Pd	CheapString	★★★★★		SoundEngine	SEMetaV2.syx
Pd	CheeseKeys	★★★★★		SoundEngine	SEMetaV2.syx
Pd	Closer	★★★★★		SoundEngine	SEMetaV2.syx
Fx	Code X	★★★★★		SoundEngine	SEMetaV2.syx
Pd	ComSat	★★★★★		SoundEngine	SEMetaV2.syx
Pd	Connect	★★★★★		SoundEngine	SEMetaV2.syx

This Child Window is a special View that shows the contents of the FS1R Library.

Like the standard [Table View](#), you can select the view of type of objects that you wish to view (e.g. Voices, Performances, etc.), which includes Files and Authors that are stored in the Database.

The window can be configured to be either a [Tree](#) or a [Table](#) view. The [Table](#) view is recommended because filtering capabilities are available, which are described below.

FS1R Library Table View Columns

The following columns can be found in the Library table.

Category	The Category of an Object. Not all Objects have a defined Category
Name	The Name of an Object. Note that this name can be up to 50 characters long, so you can provide a more meaningful name for an object within the Library (the original name is preserved for when the object is copied from the Library).
Rating	Each Object object can be assigned a rating, from unrated to five stars. Filtering on this column will allow you to quickly find you favourite items.
Comment	Each object can have a comment associated with it of up to 100 characters. For example, you could use this field to contain keywords that you use to describe a sound's character in more detail. This could help you to define a filter to search for a sound.
Author	You can define the Author for each Object. This field defaults to "Unknown" when objects are added to the Library. You can setup fs.factory to prompt you for an Author name when a new file is being added to the database.
Source	The name of the source file that an Object was copied from when it was added to the Library.

Table Sorting

You can sort a table by a column by clicking on a column heading in the table header. for example to sort voices by name, then click on the **Name** column heading. The sorting will cycle through the following states each time you click a column header:

- Unsorted
- Sort Ascending
- Sort Descending

Data Export

If you check the **Automatically Export Selected Item** option, then when you select a Voice it is automatically exported to the Voice Edit Buffer.

This, for example, allows you use the cursor keys to move though the library Voices and have them automatically exported to the Edit Buffer without having to do anything else. Please note however, that with this option enabled, then the scrolling is slowed down. Don't forget that you can double click on a Voice to export it.

Table Filtering

The database table provides a very comprehensive filtering capability, which allows you to filter on any column or combination of columns. For example, you can filter on voices with a name that contains the phrase "Fred", combined with a category filter for "pads", combined with a type filter for AWM voices, and finally filter for those which have a three star rating.

You can enter a filter for each column using the filter header that is above the table column names.

Table filtering works in conjunction with table sorting

A filter with a grey background is restricted to filtering by items that you can select from the drop down list. For example, a rating value can only be unrated or rated between 1 and 5 stars

A filter with a yellow background allows you to enter a [PERL Regular Expression string](#) that acts as a filter. Consider the following PERL examples for filtering by name:

- **drum** will match all names containing the phrase **drum** (anywhere in the name);
- **^t** will match all names beginning with the letter **T** ('^' anchors the search to the start of the name);
- **[0-9]\$** will match all names ending with a number character between **0** and **9**. ('\$' anchors the search to the end of the name);
- **^M[0-9]** will match all names starting with letter **M** followed by a numeric character.

That is just an overview of how you can use regular expressions for filtering. More details for how you can form regular expression pattons can be found on the [PERL Regular Expression Page](#)

The drop down list for a Perl Regular Expression filter provides a history of the search terms entered during the session.

Table Filter Controls

At the bottom of the table is a toolbar with the following controls:

Enable Filter	Turns the filter on or off.
Configure Filter	Brings up the Configure Filter dialog box allowing you to control the default behaviour of how the Rating, Comment, Author and Source File columns are filtered.
Reset Filter	Resets the filter.

Table Filter Configuration

When the **Configure Filter Dialog** button is selected, the following dialog appears that allows you to control the behaviour of the filter for specific columns.



- **Rating** - allows you to select whether or not an exact match is required, or if the filter is to allow ratings greater than or equal to the one shown.
- **Comment** - allows you to select if a PERL Regular Expression can be entered, or if choices are restricted to the choices provided in the drop down dialog.
- **Author** - allows you to select if a PERL Regular Expression can be entered, or if choices are restricted to the choices provided in the drop down dialog.
- **Source File** - allows you to select if a PERL Regular Expression can be entered, or if choices are restricted to the choices provided in the drop down dialog.

Status Bar

C:\FS1R\Voices\CYBER.SYX	SYSEX File	Modified					Voices	Voices
--------------------------	------------	----------	--	--	--	--	--------	--------

The Status Bar provides the following pieces of information (from left to right) for the [Child Window](#) which is currently selected:

- The name of the file currently open, if any. If no file has been selected then this field is blank
- The type of the file
- Whether or not the file has been modified
- If the left/top split pane is a table this indicator identifies what the table is showing (Voices or Performances)
- If the right/bottom split pane is a table this indicator identifies what the table is showing (Voices or Performances)

The Status Bar can be hidden/unhidden by the **Status Bar** menu option on the [View](#) menu

Program Features

fs.factory provides the following features:


- [File Operations](#)
- [Undo/Redo Support](#)
- [Clipboard Support](#)
- [MIDI Support](#)
- [Library Support](#)
- [Find and Goto Support](#)
- [Editing Features](#)

File Operations

fs.factory supports the following file operations:

- [Create New Files](#)
- [Open Existing Files](#)
- [Save Files](#)
- [Open and Save Workspaces](#)
- [Export Data](#)

Create New File


When the **New File ...** option from the [File](#) Menu or the  button on the [Toolbar](#) is selected, the following dialog appears to allow you to select the type of file to create:

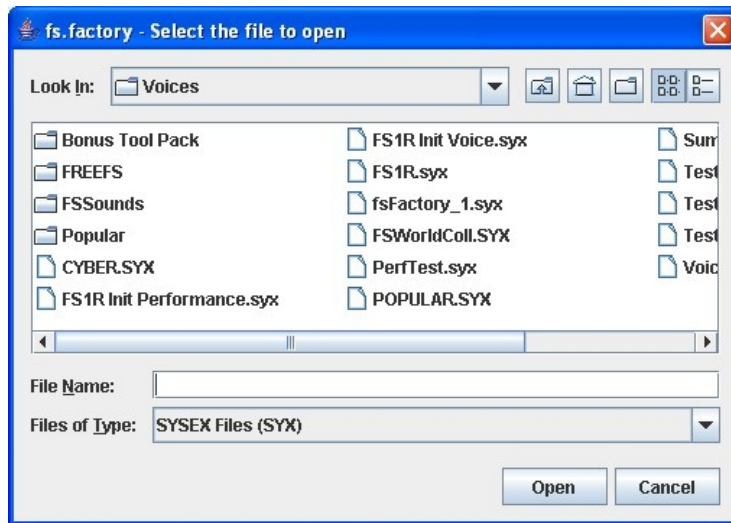


The new data file is given a name in the form of "fsfactory_n", where **n** is a number that increments every time a file is created.

Note, this is different from initialising data in a file, as a totally new file is created.

Open Existing File

When the **Open ...** option from the [File](#) menu or the  button on the [Toolbar](#) is selected the following dialog will appear, allowing a file to be selected.



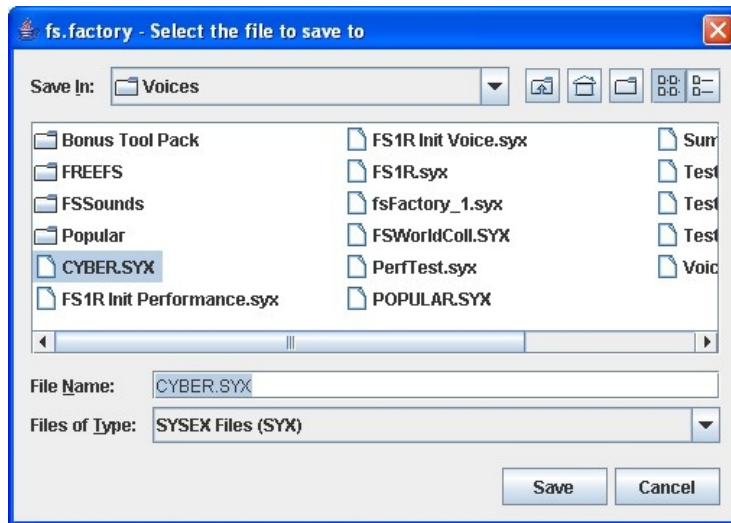
fs.factory checks to ensure that the selected file is a valid Yamaha format file, and an error dialog will appear if the file is not valid.

You can open FS1R SYSEX files or DX7/DX7II SYSEX files (if fs.factory is [registered](#)).

If a file selected for opening is already open, fs.factory will ask if you want to replace the file that is in memory.

Save Open Files

When you save a file to disk using: the **Save As ...** command from the [File](#) Menu, or when a file created using the **New ...** command from the [File](#) Menu is saved for the first time, the following dialog appears to allow you to select a name for the file



You can save a file to a different type by selecting **Files of Type** to be the new file type.

Workspaces

fs.factory allows you to save the current size and position of the main fs.factory window, and the arrangement of the open [Child Windows](#) within fs.factory to a file known as a **Workspace**.

This allows you to save a **Workspace** you are using for future recall at a later date.

The following for each [Child Window](#) remembered:

- Window size, position and status (normal, maximised or minimised)
- Horizontal/Vertical Splits, including split position
- Pane type(s) (e.g. Tree, Voice Table or Performance Table)
- Tree node expansion status
- Table column widths
- Scroll position of the pane(s)
- Selection state of the tree nodes, or table rows

Export Data

fs.factory allows you to export the data in the currently selected file to a variety of different formats.

- [HTML](#)
- [XML](#)
- [Cubase VST Patch List](#)
- [ProTools Patch List](#)
- [Sonar Patch List](#)
- [SpreadSheetML](#)

HTML ...

This option allows you to export a listing of the data in HTML format.

The following dialog will appear, allowing you to select the features to be exported:



XML ...

This option allows you to export a listing of the data in XML format.

The following dialog will appear, allowing you to select the features to be exported.



This export option is intended to provide a means of importing FS1R data into other programmes, e.g. a database

Cubase VST Patch Script ...

This option allows you to export a listing of the Voice/Performance data in Cubase VST patch script format.

This allows you to create patch scripts for use within Cubase to ease the selection of patches within the Cubase environment.

Consult your sequencer documentation for details on how to install the patch scripts within your sequencer.

Protools Patch Script ...

This option allows you to export a listing of the Voice/Performance data in Protools patch script format (MIDMAN files).

This allows you to create patch scripts for use within Protools to ease the selection of patches within the Protools environment.

Consult your sequencer documentation for details on how to install the patch scripts within your sequencer.

Sonar Patch Script ...

This option allows you to export a listing of the Voice/Performance data in Sonar patch script format.

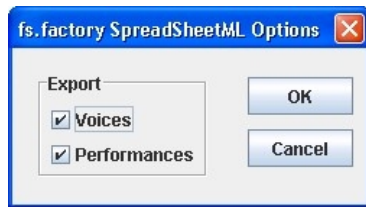
This allows you to create patch scripts for use within Sonar to ease the selection of patches within the Sonar environment.

Consult your sequencer documentation for details on how to install the patch scripts within your sequencer.

SpreadSheetML ...

This option allows you to export a listing of the data in Microsoft SpreadSheetML format.

The following dialog will appear, allowing you to select the features to be exported.



This export option is intended to provide a means of importing FS1R data into either Microsoft Word or Excel, which is a great way to start documenting your patch collections

Undo Buffer

fs.factory supports a multi-level Undo/Redo Buffer facility on all edits.

The number of edits which are stored is 100.

The Undo/Redo commands can be found both within the [Edit Menu](#), and on the [Toolbar](#).

Please note that the undo buffer is global across all open files, and is cleared when any file is closed. This may be improved in later releases.

The undo buffer can be cleared by the selecting the **Clear Undo Buffer** option on the [Edit Menu](#). The intention of this feature is to help cope with low memory situations, as it will free up the memory used by stored edits.

Clipboard Support

The fs.factory clipboard works just like the clipboard in other applications. It allows you to place an Object or a copy of an Object upon the clipboard and then paste that Object elsewhere within a file or another file.

You can Cut/Copy either a single Object or a Collection of Objects onto the clipboard.

You can only paste from the clipboard to the current location in a file if it makes sense to do so. For example:

- You cannot paste a Voice onto a Performance
- You cannot paste ten Voices at the end of a Voice Collection if the selection is at Voice 120 or higher

The fs.factory clipboard is "local" to the application, and only fs.factory Objects can be placed upon it.

fs.factory does not support the system clipboard so it is not possible to cut and paste between fs.factory and other applications. I don't think this is a major drawback because I cannot think of any circumstances where you would wish to do this!

MIDI Support

To use fs.factory MIDI Export support, your copy of fs.factory needs to be [registered](#).

Configuring MIDI Support

To configure MIDI support, go to the [MIDI Preferences](#) tab in the [Preferences](#) Dialog, and set up the following:

- **Input MIDI Port** and **Output MIDI Port** should be set to the MIDI port(s) to which the FS1R is connected
- **SYSEX Device Number** should match the FS1R **Device Number** setting

If the Device Number on the FS1R is set to **ALL** then it will accept data for any SYSEX Device.

You can check that these settings work by pressing the **Test FS1R MIDI Settings** button. When you press this button a test message is sent to the FS1R and the subsequent Dialog will tell you if communication was successful or if there was a problem.


The above steps set up the basic communication mechanism for MIDI support, and you then can set up the remaining options according to your preferences:

- If you never work with Performances then you can exclude them from the bulk transfers by clearing the **Include Performances in Bulk Transfer** checkbox
- If you wish for fs.factory to always read the FS1R Voice/Performances on startup then check the **Read FS1R MIDI Data on Startup** checkbox
- If you wish for changes made to the FS1R Synthesizer Window to be automatically written to the FS1R then check the **Automatically Update FS1R after Synth Window Edit** checkbox
- You can adjust how long that fs.factory will wait for a response from the FS1R by adjusting the **Timeout Delay** value, which is given in milliseconds


The **Transmit Buffer Size**, **Transmit Delay Between Buffers** and **Transmit Delay Between Objects** values should not require adjustment. fs.factory sends data to the FS1R by dividing the data into packets the size of which are specified by the **Transmit Buffer Size** value. When fs.factory sends a packet it waits for the time period specified by **Transmit Delay Between Buffers** before sending the next packet, and it waits for the time period specified by **Transmit Delay Between Objects** after the last packet is sent. The delay parameters are specified in milliseconds. You may need to adjust these values (smaller buffers, longer delays) if communications is not reliable, and you may if you wish adjust these values (larger buffers, smaller delays) to maximise data transfer performance. If you adjust these values, please ensure that you test the transfer to ensure it is reliable, *otherwise you may risk losing data*. Note: Some MIDI interfaces do not like large packet sizes: I recently upgraded to a MOTU interface and ran into problems with MIDI export until I altered fs.factory to send messages in small chunks defined by the above parameters!

Copying/Moving Voices and Performances

In operation, using MIDI is quite straightforward.

You can get all the FS1R Voices/Performances into any [Child Window](#) (including the [FS1R Synthesizer Window](#)) by selecting the **Import from MIDI** option on the [MIDI Menu](#), or the  button on the [Tool Bar](#).

This imports all Voices, and all Performances if you have set the [MIDI Preferences](#) options to include Performances during the bulk transfers into the selected window.

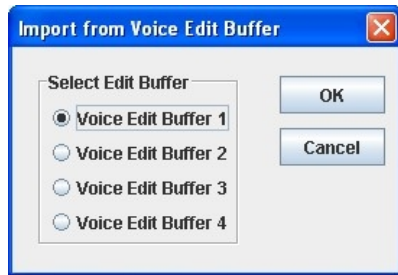
Similarly you can also export all Voices and Performances using the **Export MIDI** option on the [MIDI Menu](#), or the  button on the [Tool Bar](#).

Note if you import or export MIDI data to/from a [Child Window](#) which is opened from a data file, then the [FS1R Synthesizer Window](#) is also updated with the Voices/Performances being imported/exported.

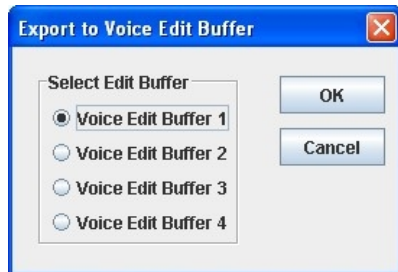
And you can also [move/copy](#) Voices/Performances between the [FS1R Synthesizer Window](#) and [Child Window](#) using drag and drop.

You can also import/export a Voice or Performance to/from the FS1R Edit Buffer by selecting a single Voice/Performance and selecting the import/export to/from FS1R Edit Buffer options from the Voice's or Performance's Context Sensitive Menu. You can also use the [keyboard shortcuts](#) for doing this.

If you wish to import a Voice from the FS1R edit buffers then the following dialog will appear, allowing you to specify which Voice Edit Buffer to import from:



Similarly, if you wish to export a Voice to the FS1R Edit Buffers then the following dialog will appear, allowing you to specify which Voice Edit Buffer to export to:




Exporting Performances from fs.factory to the FS1R Edit Buffer is really handy, for example, when trying to find a particular Performance in a file and you don't wish to load the whole file into the FS1R.

If you send a Performance to the FS1R then any user Voices required by the Performance are also copied over to the FS1R Voice Edit Buffers.

Finally you can also perform all the operations on Voices/Performances in the [FS1R Synthesizer](#) Window that you can upon Voices/Performances in a normal [Child Window](#).

If you have the **Automatically Update FS1R after Synth Window Edit** option active, when you change data the [FS1R Synthesizer](#) Window then the changes are automatically exported to the FS1R.

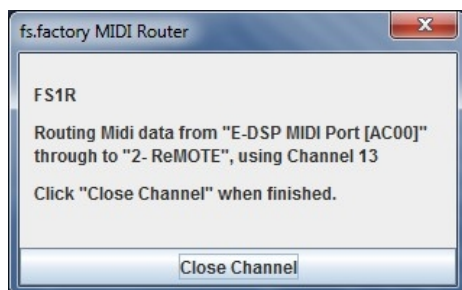
So you may wish to turn the **Automatically Update FS1R after Synth Window Edit** option off during intensive editing sessions. Once you've made all your changes you then select the **Export MIDI** option on the [MIDI Menu](#), or the  button on the [Tool Bar](#) Export option to manually export the changes.

If you quit fs.factory with changes still present in the [FS1R Synthesizer](#) Window that have not been exported, then you will be asked if you wish to export the data or not.

MIDI Keyboard Routing

fs.factory has a facility to allow MIDI data from an additional MIDI input port, defined in the [MIDI Preferences](#) options dialog, to be routed to the port you have selected for fs.factory to output MIDI data on. This allows, for example, you to use a master keyboard (which may be closer to your computer) to be used when auditioning FS1r sounds that you've sent from fs.factory to the FS1r edit buffer.

You access this feature by selecting the **FS1R MIDI Router ...** option in the [MIDI Menu](#) or by pressing the **F12** function key whenever you need it, which activates the following dialog.



The router uses the MIDI channel defined in the [MIDI Preferences](#) dialog This can either be the channel transmitted by the source device, or the specified channel.

The routing is active until you close the dialog by selecting the **Close Channel** button or by pressing the **ESC** key.

Library Support

To use the fs.factory Library, your copy of fs.factory needs to be [registered](#).

Configuring the Library

To configure the Library, go to the [Library Preferences](#) tab in the [Preferences](#) Dialog, and set up the preferences for the Library.

Adding Objects to The Library

The following Objects can be added to the Library.

- Synthesizer
- Voices
- Performances

You can add Objects to the Library using the following methods:

- Use the **Add To Library** function that can be found in an Object's context menu;
- [Drag Copy](#) an Object or Selection of Objects over the [FS1R Library Window](#).
- Using the copy and paste functions of the [Clipboard](#).

Please note that you can only **Drag Copy** Objects to the [FS1R Library Window](#); you cannot **Drag Move** them.

Referenced objects are also copied to the Library if they are not already present in the Library. For example, if you copy a Performance and it references Voices then they are also copied if required.

If an object is copied to the Library and it is already present in the library (either a complete match or just a match in name), then the actions you have configured in the [Library Preferences](#) tab in the [Preferences](#) Dialog are taken.

You can also [Batch Import](#) files to the library

Copying Objects From The Library

You can copy Objects from the Library to a file using the following methods:

- [Drag Copy](#) an Object or Selection of Objects from the the [FS1R Library Window](#) to a file.
- Using the copy and paste functions of the [Clipboard](#) to copy an object from the [FS1R Library Window](#) and paste it to a destination file.

Referenced objects are also copied from the Library if they are not already present in the destination file and if the destination file supports them. For example, if you copy a Performance and it references Voices then they are also copied if required.

Deleting Objects From The Library

To delete an object from the library, right click over the Object or selection of Objects and select the **Delete** option from the context menu

Exporting Voices and Performances From The Library to the FS1R

You can send Voices and Performances from the Library to the FS1R edit buffer by right clicking over a selected object and selecting the **Export to FS1R Edit Buffer** option from the context menu.

You can also [Drag Copy](#) an Object or Selection of Objects from the the [FS1R Library Window](#) to the [FS1R Synth Window](#)

Extracting Files from the Library

If you set the Library Table View to show Files, you can right click over a file and select the **Extract File** menu option, which will recreate the original file from all the source data held in the database. The file can then be saved. This option is also available for Files shown in the Library Tree View

List File Usage

If you right click over an object in the Library, and select the **List File Usage...** menu option, a dialog will be displayed which shows all the files in the Library that make use of that object.

Several files may refer to a single object based on the setting on the Library import preferences if they are set not to add identical objects. If this is set only a single copy is stored, and all files that contained the identical object only refer to that single object within the Library

New Author

If you set the Library Table View to show Authors, you can right click in the Table and select the **New Author** menu option, which displays a dialog that allows you to create a new Author. This option is also available in the Library Tree View by right clicking over the **Author** branch

Library Information ...

Opens the [Library Statistics](#) dialog.

Find and Goto Facilities

Find Dialog

fs.factory supports the ability to find Objects by name.

Searches start from the currently selected Object.

Selecting the **Find ...** option on the [Edit Menu](#) brings up the **Find** dialog, that allows you to specify the string to search for. In addition, there are several options that can be selected to help refine the search.



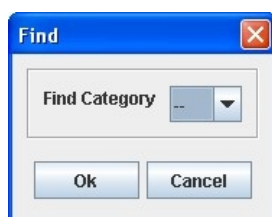
Find What	The text string to search for.
Match Case	If this option is checked then the search is case sensitive. If this option is not checked then the search is case insensitive.
Match Whole Name	If this option is checked then the search string must match the entire name of an Object. E.g. "pan" would match a Voice called "pan", but not a Voice called "pandora". If this option is not checked then the search can match a sub string within a name. E.g. "dor" would match a Voice named "dor" and a Voice called "pandora".
Use Wild Cards	If checked fs.factory will treat the "Find What" text as a "regular expression" to allow you more control over the search, such as matching text at the start of a name, or the end of a name, words with numbers in, etc.

The regular expression language used for fs.factory wild card support is the Perl Regular Expression Syntax. Rather than try and write up this powerful syntax myself into the fs.factory documents, I'll direct you to the [Perl Regular Expression Syntax](#) page for a description of how to use this powerful feature.

Find Category Dialog

You can also search by category by selecting **Find Category ...** option on the [Edit Menu](#), which brings up the **Find Category** Dialog.

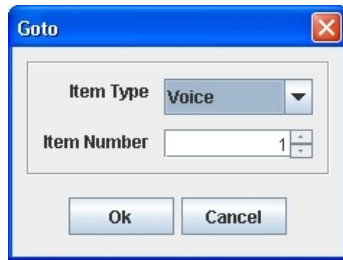
This option allows you to search, for example, for all string Voices in a file.



Simply select the Category from the "Find Category" combo box that you wish to search for, and that's all there is to it.

Goto Dialog

Selecting this option on the on the [Edit Menu](#) brings up the **Goto** Dialog



Item Type	The type of Object to go to <ul style="list-style-type: none">• You can select either Voices or Performances in a Tree View.• If a Voice Table is the selected view, then you can only Goto another Voice.• If a Performance Table is the selected view, then you can only Goto another Performance.
Item Number	The number of the Object to go to.

Note that **Goto** is not support in the [FS1R Library Window](#).

Editing Features

fs.factory supports the following editing features:

- [General Editing Features](#)
- [Synth Editing Features](#)
- [Voice Editing Features](#)
- [Performance Editing Features](#)
- [System Settings Editing Features](#)

General Editing Features

fs.factory supports many editing features, some of which are classed as general features that are applicable to all or most Objects.

The general features are described here in one place for convenience:

- [Copy/Move Object](#)
- [Initialise Object](#)
- [Rename Object](#)
- [Insert Object](#)
- [Delete Object](#)
- [List Object References](#)
- [Sort Objects](#)
- [Add Objects to Library](#)

The following table shows whether or not a general edit operation can be applied to a particular type of Object:

Object Type	Move	Copy	Initialise	Rename	Insert	Delete	List	Sort	Add To Library
Synth Object	Y	Y	Y	N	N	N	N	N	Y
Voice Collection	Y	Y	Y	N	N	N	N	Y	Y
Voice	Y	Y	Y	Y	Y	Y	Y	N	Y
Voiced Operator Collection	Y	Y	Y	N	N	N	N	N	N
Voiced Operator	Y	Y	Y	N	Y	Y	N	N	N
Unvoiced Operator Collection	Y	Y	Y	N	N	N	N	N	N
Unvoiced Operator	Y	Y	Y	N	Y	Y	N	N	N
Performance Collection	Y	Y	Y	N	N	N	N	Y	Y
Performance	Y	Y	Y	Y	Y	Y	N	N	Y
Performance Part Collection	Y	Y	Y	N	N	N	N	N	N
Performance Part	N	N	Y	N	N	N	N	N	N
Performance Effects Collection	Y	Y	Y	N	N	N	N	N	N
Performance Reverb Unit	Y	Y	Y	N	N	N	N	N	N
Performance Variation Effect Unit	Y	Y	Y	N	N	N	N	N	N
Performance Insert Effect Unit	Y	Y	Y	N	N	N	N	N	N
Performance 3 Band EQ Unit	Y	Y	Y	N	N	N	N	N	N
Performance Controller Collection	Y	Y	Y	N	N	N	N	N	N
Performance Controller	Y	Y	Y	N	Y	Y	N	N	N
Performance Formant Sequence	Y	Y	Y	N	N	N	N	N	N
System Parameters	Y	Y	Y	N	N	N	N	N	N

Copy/Move Object

fs.factory makes extensive use of drag and drop for copying and moving Objects.

You can drag copy or move Objects within a file or between files, and you can drag single items or multiple items.

The default drag operation is to move an Object, and there are two types of move operations:

- Moving an Object within its Parent Collection (e.g. moving a Voice from location 1 to location 4)
- Moving an Object to a new Parent Collection (e.g. moving a Voice from one file to another file)

When you move an Object to a new Parent Collection then the original Object is removed and replaced with an initialised Object of the same type.

To copy an Object using drag and drop, you must have the **DRAG MODIFIER** key held down during the operation. The **DRAG MODIFIER** key is platform dependent. On the PC platform it is the **CTRL** key.

You can tell that a copy operation is in progress as the drag image icon has a + sign visible.

When you drag multiple items they must be of the same type. For example you can drag several Voices, but not Voices and Performances together.

fs.factory provides the following drag/drop feedback to assist in determining the effects of a drag/drop operation:

- Cursor: Indicates if the move is either a copy or a move, or if the drop is invalid (e.g. trying to drag a Voice onto an Element)
- Drag image: A simple pictorial representation of what is being dragged
- Drop Point: fs.factory shows the drop point as either a cue line drawn between Objects if an Object is being moved within its parent (e.g. an Operator within a Voice), or a cue rectangle drawn around the drop location for all other moves and copy operations which are valid

When a [Child Window](#) is split, Objects can be dragged and dropped between either side of the split point. This is handy, for example, for dragging Objects between the start of a Collection and the end of a Collection.

The [Tree](#) and [Table](#) views will auto-scroll in drag and drop operations, when you move the cursor to either the top or the bottom of the pane and hold it there.

If you drag an Object onto a [Tree View](#) and over a valid parent Object (e.g. an Operator over a Voice) and the parent Object is collapsed within the Tree, and you hold the cursor over the Parent Object for a few seconds it will automatically expand.

fs.factory will maintain the references to Voices in Performance Parts when moving Voices within a file.

For example if you move a Voice from Location 2 to Location 10, then any Performance Parts which are referencing Voices at Locations 2 and above will be updated to ensure they still reference the same Voices after the move operation as they were before the move operation.

The ability to update Voice references following a move or to copy referenced Voices during a move to a new file can be selectively turned on or off within the [Preferences](#) Dialog.

Initialise Object

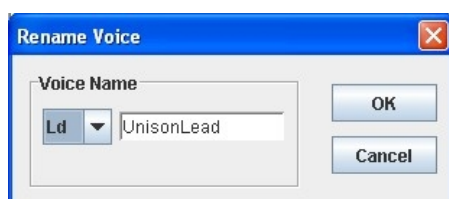
Initialises the selected Object to its default state.

Multiple Objects of the same type can be selected for initialisation.

The **Initialise** command is found upon the **Context Sensitive Menu** in both the [Tree View](#) and the [Table View](#).

Rename Object

Renames the selected Object using the following dialog, which can also be used to change the object category:



Only one Object can be selected for renaming.

The **Rename** command is found upon the **Context Sensitive Menu** in the [Tree View](#)

To rename Objects in the [Table View](#), simply double click in the **Name Cell** of the required Object to edit the name.

Insert Object

Inserts an Object into a Collection at the current location.

The **Insert** command is found upon the **Context Sensitive Menu** in both the [Tree View](#) and the [Table View](#).

You can insert more than one Object at a time by selecting multiple Objects prior to executing the **Insert** command.

For example if you wish to insert three Performances at location 10, select Performances 10, 11 and 12 and then execute the **Insert** command.

Note that when you insert one or more Objects, then the commensurate number of Objects at the end of the Parent Collection are removed if required. This is necessary to maintain the correct number of Objects in a Collection.

For example, an FS1R Voice Collection can only contain 128 Voices, so if two Voices are inserted into the Collection then two Voices must be removed from the end of the Collection to maintain the correct size.

fs.factory will maintain the Performance Part references to Voices when inserting Voices.

For example if you insert a Voice into a file at Location 10, then any Performance Parts which are referencing Voices at Locations 10 and above will be updated to ensure they still reference the same Voices after the insert operation as they were before the insert operation.

Delete Object

Deletes an Object at the current location.

The **Delete** command is found upon the **Context Sensitive Menu** in both the [Tree View](#) and the [Table View](#).

You can delete more than one Object at a time by selecting multiple Objects prior to executing the **Delete** command.

For example if you wish to delete three Performances at location 10, select Performances 10, 11 and 12 and then execute the **Delete** command.

Note that when you delete one or more Objects, then a commensurate number of Objects at the end of the Parent Collection are added if required. This is necessary to maintain the correct number of Objects in a Collection.

For example, an FS1R Voice Collection must contain 128 Voices, so if two Voices are deleted from the Collection then two Voices must be added to the end of the Collection to maintain the correct size.

fs.factory will maintain Performance Part references to Voices in a Collection when deleting Voices.

For example if you delete a Voice from a SYSEX file at Location 10, then any Performance Parts which are referencing Voices at Locations 10 and above will be updated to ensure they still reference the same Voices after the delete operation as they were before the delete operation.

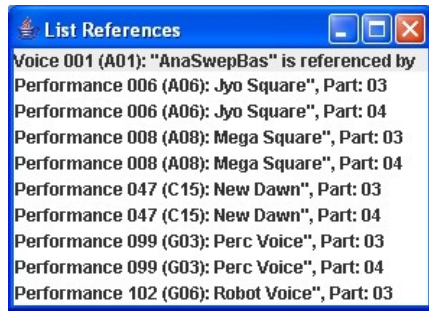
List Object References

The **List References** command is found upon the **Context Sensitive Menu** in both the [Tree View](#) and the [Table View](#).

The **List References** command is only available if:

- Only one Voice is selected
- The Voice selected is referenced by a Performance, which is indicated by the Voice being coloured blue

The references are shown as follows:



The Voice being referenced is shown at the top of the Dialog followed by the Performances referencing it.

Sort Objects

The **Sort by Name** and **Sort By Category** commands are found upon the **Context Sensitive Menu** in both the [Tree View](#) and the [Table View](#).

In the [Tree View](#) the sort options are accessed via the **Context Sensitive Menu** for the Collection that you wish to sort (e.g. the Voice Collection to sort Voices).

In the [Table View](#) the sort options are accessed via the **Context Sensitive Menu** for any Object. The sort can also be initiated by clicking in the **Name** or the **Category** column headers.

Synth Editing Features

fs.factory supports the following editing operations upon the **Synth Object** within the [Tree View](#) of a [Child Window](#):

- [Move](#)
- [Copy](#)
- [Initialise](#)
- [Add To Library](#)
- [Cut to Clipboard](#)
- [Copy to Clipboard](#)
- [Paste from Clipboard](#)

To access these features other than Move and Copy (which you do via "Drag and Drop"), right click over the **Synth Object** to activate the **Synth Object's** Context Sensitive Menu.

The **Synth Object** is only shown within a [Tree View](#) and is the first Object in the [Tree View](#). It is called:

[SYSEX File](#)

Voice Editing Features

fs.factory supports the following editing operations upon the **Voice Collection** shown within the [Tree View](#) of a [Child Window](#):

- [Copy/Move](#)
- [Initialise](#)
- [Sort by Name](#)
- [Sort by Category](#)
- [Import Data From FS1R](#)
- [Export Data to FS1R](#) (only available if fs.factory is [registered](#))
- [Import Data from FS1R by Manual Dump...](#)
- [Add To Library](#)
- [Cut to Clipboard](#)
- [Copy to Clipboard](#)
- [Paste from Clipboard](#)

The **Voice Collection** Object in file is only shown within a [Tree View](#) and is called **User Voices**.

To access all features other than Move and Copy (which you do via "Drag and Drop"), right click over the **Voice Collection** to activate the **Voice Collection's** Context Sensitive Menu.

fs.factory supports the following editing operations upon the **Voice Objects** within the [Tree View](#) or [Table View](#) of a [Child Window](#):

- [Copy/Move](#)
- [Initialise](#)
- [Rename](#)
- [Insert](#)
- [Delete](#)
- [List References](#)
- [Import from FS1R Memory](#)
- [Export to FS1R Memory](#) (only if available fs.factory is [registered](#))
- [Import from FS1R Edit Buffer](#)
- [Export to FS1R Edit Buffer](#) (only if available fs.factory is [registered](#))
- [Add To Library](#)
- [Cut to Clipboard](#)
- [Copy to Clipboard](#)
- [Paste from Clipboard](#)

To access all features other than Move and Copy (which you do via "Drag and Drop"), right click over a **Voice** or selection of **Voices** to activate the **Voice's** Context Sensitive Menu.

You can also directly edit the [Voiced Operators](#)

You can also directly edit the [Unvoiced Operators](#)

Import from FS1R Memory

Imports Voices from the FS1R Memory locations into the currently selected [Child Window](#).

You can import:

- A Single Voice
- A Selection of Voices
- All Voices by selecting the Voice Collection

Export to FS1R Memory

Exports Voices from the currently selected [Child Window](#) to the FS1R Memory locations.

You can export:

- A Single Voice
- A Selection of Voices
- All Voices by selecting the Voice Collection

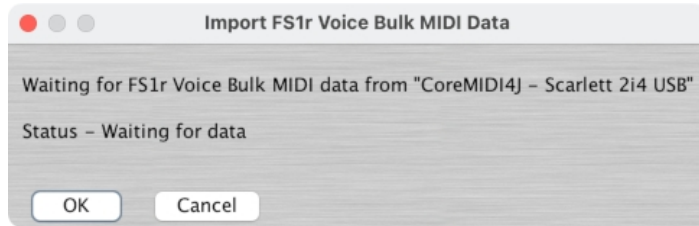
Import from FS1R Memory by Manual Dump

Imports Voices from the FS1R Memory locations into the currently selected [Child Window](#) using the manual bulk dump features of the FS1R.

This option has been added because the BULK dump of voices and performances from the FS1R panel is about 12 times faster than fs.factory requesting each Voice/Performance. For some reason, the FS1R

enforces delay of three seconds after each operation even though the transfer takes less than a second. This significantly slows down a transfer

When you select this option, the following dialog is shown.

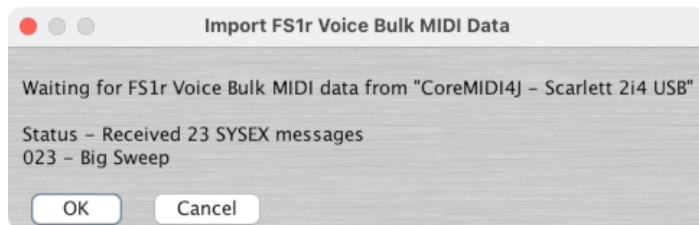


fs.factory is now waiting for you to initiate the BULK DUMP from the FS1R. If required you can press the CANCEL button to cancel the dump.

to initiate the BULK DUMP, follow the instructions below using the buttons on the FS1R front panel.

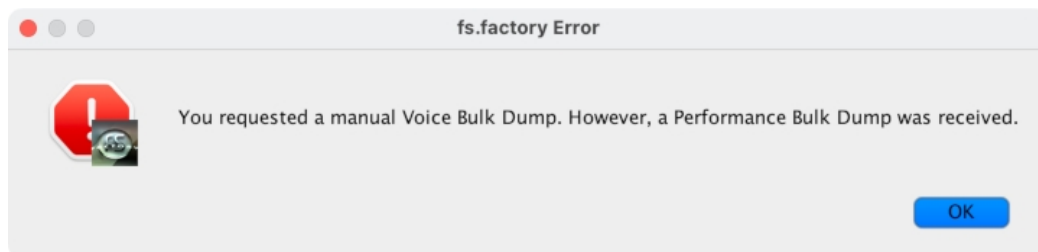
- Press the **UTIL** button.
- Use the **CURSOR** buttons to select the **DUMP** option and press the **ENTER** button.
- Use the **CURSOR** buttons to select the **Voice** option and press the **ENTER** button.
- You will now see a flashing **all** in the right of the display. Press the **ENTER** button to initiate the bulk dump or the **EXIT** button to cancel.

Once data is being transmitted by the FS1R, fs.factory will show the progress in the dialog box as shown below. Whilst the FS1R will transmit all data until it is finished, if you wish you can cancel the download in fs.factory.



Once all data has been transmitted, press the OK button to import the data into the current file (or synth window) or press the CANCEL button to cancel the import.

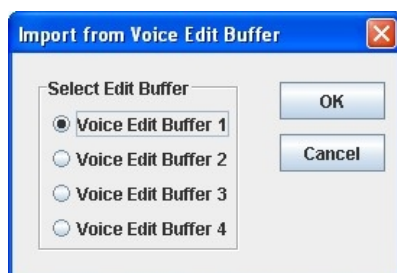
If you requested the import of Voices, but inadvertently transmitted Performances from the FS1R, then the following error dialog is shown.



Import from FS1R Edit Buffer

Imports the Voice currently in an FS1R Voice Edit Buffer into the Voice currently selected within the active [Child Window](#).

When you select this option, the following dialog will appear, allowing you to specify which voice edit buffer to import from:

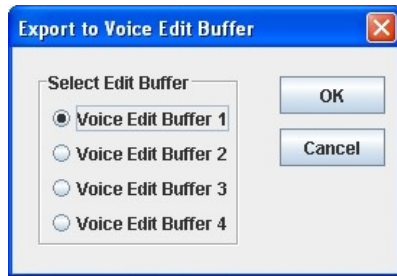


Note if you have more than one Voice selected then this operation is not available

Export to FS1R Edit Buffer

Exports the Voice currently selected within the active [Child Window](#) to an FS1R Voice Edit Buffer.

When you select this option, the following dialog will appear, allowing you to specify which Voice Edit Buffer to export to:



Note if you have more than one Voice selected then this operation is not available

Voiced Operator Editing Features

fs.factory supports the following editing operations upon the **Voiced Operator Collection** shown within the [Tree View](#) of a [Child Window](#):

- [Copy/Move](#)
- [Initialise](#)
- [Cut to Clipboard](#)
- [Copy to Clipboard](#)
- [Paste from Clipboard](#)

To access all features other than Move and Copy (which you do via "Drag and Drop"), right click over the **Voiced Operator Collection** to activate the **Voiced Operator Collection's** Context Sensitive Menu.

fs.factory supports the following editing operations upon the **Voiced Operator Objects** within the [Tree View](#) of a [Child Window](#):

- [Copy/Move](#)
- [Initialise](#)
- [Insert](#)
- [Delete](#)
- [Cut to Clipboard](#)
- [Copy to Clipboard](#)
- [Paste from Clipboard](#)

To access all features other than Move and Copy (which you do via "Drag and Drop"), right click over a **Voiced Operator** or selection of **Voiced Operators** to activate the **Voiced Operator's** Context Sensitive Menu.

Unvoiced Operator Editing Features

fs.factory supports the following editing operations upon the **Unvoiced Operator Collection** shown within the [Tree View](#) of a [Child Window](#):

- [Copy/Move](#)
- [Initialise](#)
- [Cut to Clipboard](#)
- [Copy to Clipboard](#)
- [Paste from Clipboard](#)

To access all features other than Move and Copy (which you do via "Drag and Drop"), right click over the **Unvoiced Operator Collection** to activate the **Unvoiced Operator Collection's** Context Sensitive Menu.

fs.factory supports the following editing operations upon the **Unvoiced Operator Objects** within the [Tree View](#) of a [Child Window](#):

- [Copy/Move](#)
- [Initialise](#)
- [Insert](#)
- [Delete](#)
- [Cut to Clipboard](#)
- [Copy to Clipboard](#)
- [Paste from Clipboard](#)

To access all features other than Move and Copy (which you do via "Drag and Drop"), right click over a **Unvoiced Operator** or selection of **Unvoiced Operators** to activate the **Unvoiced Operator's** Context Sensitive Menu.

Performance Editing Features

fs.factory supports the following editing operations upon the **Performance Collection** shown within the [Tree View](#) of a [Child Window](#):

- [Copy/Move](#)
- [Initialise](#)
- [Sort by Name](#)
- [Sort by Category](#)
- [Import Data from FS1R](#)
- [Export Data to FS1R](#) (only available if fs.factory is [registered](#))
- [Import Data from FS1R by Manual Dump...](#)
- [Add To Library](#)
- [Cut to Clipboard](#)
- [Copy to Clipboard](#)
- [Paste from Clipboard](#)

The **Performance Collection** Object in a file is only shown within a [Tree View](#) and is called **User Performances**.

To access all features other than Move and Copy (which you do via "Drag and Drop"), right click over the **Performance Collection** to activate the **Performance Collection's** Context Sensitive Menu.

fs.factory supports the following editing operations upon the **Performance Objects** within the [Tree View](#) or [Table View](#) of a [Child Window](#):

- [Copy/Move](#)
- [Initialise](#)
- [Rename](#)
- [Insert](#)
- [Delete](#)
- [Import from FS1R Memory](#)
- [Export to FS1R Memory](#) (only if available fs.factory is [registered](#))
- [Import from FS1R Edit Buffer](#)
- [Export to FS1R Edit Buffer](#) (only if available fs.factory is [registered](#))
- [Add To Library](#)
- [Cut to Clipboard](#)
- [Copy to Clipboard](#)
- [Paste from Clipboard](#)

To access all features other than Move and Copy (which you do via "Drag and Drop"), right click over a **Performance** or selection of **Performance** to activate the **Performance's** Context Sensitive Menu.

Within the [Tree View](#) of a [Child Window](#) you can also directly edit the following Objects that make up a **Performance**:

- [Performance Parts](#)
- [Performance Effects](#)
- [Performance Controllers](#)
- [Performance Formant Sequence](#)

Import from FS1R Memory

Imports Performances from the FS1R Memory locations into the currently selected [Child Window](#).

You can export:

- A Single Performance
- A Selection of Performances
- All Performances by selecting the Performance Collection

Export to FS1R Memory

Exports Performances from the currently selected [Child Window](#) to the FS1R Memory locations.

Import from FS1R Memory by Manual Dump

Imports Performances from the FS1R Memory locations into the currently selected [Child Window](#) using the manual bulk dump features of the FS1R.

This option has been added because the BULK dump of voices and performances from the FS1R panel is about 12 times faster than fs.factory requesting each Voice/Performance. For some reason, the FS1R enforces delay of three seconds after each operation even though the transfer takes less than a second. This significantly slows down a transfer

When you select this option, the following dialog is shown.

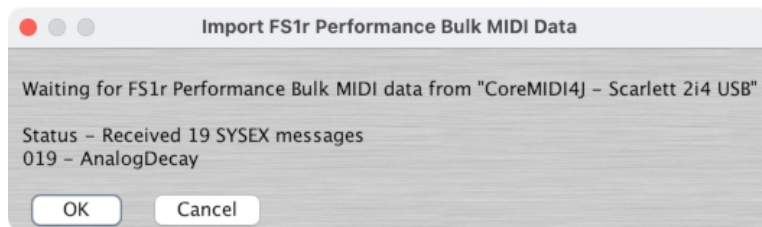


fs.factory is now waiting for you to initiate the BULK DUMP from the FS1R. If required you can press the CANCEL button to cancel the dump.

to initiate the BULK DUMP, follow the instructions below using the buttons on the FS1R front panel.

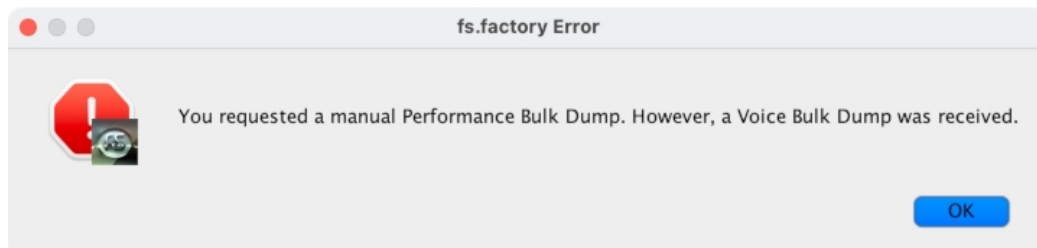
- Press the **UTIL** button.
- Use the **CURSOR** buttons to select the **DUMPOUT** option and press the **ENTER** button.
- Use the **CURSOR** buttons to select the **Perform** option and press the **ENTER** button.
- You will now see a flashing **all** in the right of the display. Press the **ENTER** button to initiate the bulk dump or the **EXIT** button to cancel.

Once data is being transmitted by the FS1R, fs.factory will show the progress in the dialog box as shown below. Whilst the FS1R will transmit all data until it is finished, if you wish you can cancel the download in fs.factory.



Once all data has been transmitted, press the OK button to import the data into the current file (or synth window) or press the CANCEL button to cancel the import.

If you requested the import of Performances, but inadvertently transmitted Voices from the FS1R, then the following error dialog is shown.



Import from FS1R Edit Buffer

Imports the Performance currently in the FS1R Edit Buffer (i.e. the currently selected Performance on the FS1R) to the Performance currently selected within the active [Child Window](#).

Note if you have more than one Performance selected then this operation is not available

Export to FS1R Edit Buffer

Exports the Performance currently selected within the active [Child Window](#) to the FS1R Edit Buffer.

Note if you have more than one Performance selected then this operation is not available

Performance Part Editing Features

fs.factory supports the following editing operations upon the **Performance Part Collection** shown within the [Tree View](#) of a [Child Window](#):

- [Copy/Move](#)
- [Initialise](#)
- [Cut to Clipboard](#)
- [Copy to Clipboard](#)
- [Paste from Clipboard](#)

To access all features other than Move and Copy (which you do via "Drag and Drop"), right click over the **Performance Part Collection** to activate the **Performance Part Collection's** Context Sensitive Menu.

fs.factory supports the following editing operations upon the **Performance Part Objects** within the [Tree View](#) of a [Child Window](#):

- [Copy/Move](#)
- [Initialise](#)
- [Insert](#)
- [Delete](#)
- [Set Voice](#)
- [Initialise](#)
- [Cut to Clipboard](#)
- [Copy to Clipboard](#)
- [Paste from Clipboard](#)

To access all features other than Copy, Move and Set Voice (which you do via "Drag and Drop"), right click over a **Performance Part** or selection of **Performance Parts** to activate the **Performance Part's** Context Sensitive Menu.

Set Voice

A **User Voice** from the same file can be dragged onto a Performance Part to set the Voice used by the Performance Part.

Preset Voices from the [FS1R Synthesizer Window](#) can be dragged onto Performance Parts as well.

Please note, the drag operation for this is **COPY** only. You cannot **MOVE** a Voice onto a Performance Part.

Performance Effects Editing Features

fs.factory supports the following editing operations upon the **Performance Effects Units Collection** shown within the [Tree View](#) of a [Child Window](#):

- [Copy/Move](#)
- [Initialise](#)
- [Cut to Clipboard](#)
- [Copy to Clipboard](#)
- [Paste from Clipboard](#)

To access all features other than Move and Copy (which you do via "Drag and Drop"), right click over the **Performance Effects Units Collection** to activate the **Performance Effects Units Collection's** Context Sensitive Menu.

fs.factory supports the following editing operations upon the individual **Performance Effects Objects** (Reverb, Variation, Insertion and EQ effects units) within the [Tree View](#) of a [Child Window](#):

- [Copy/Move](#)
- [Initialise](#)
- [Cut to Clipboard](#)
- [Copy to Clipboard](#)
- [Paste from Clipboard](#)

To access all features other than Move and Copy (which you do via "Drag and Drop"), right click over a **Performance Effect** or selection of **Performance Effects** to activate the **Performance Effects's** Context Sensitive Menu.

Performance Controller Editing Features

fs.factory supports the following editing operations upon the **Performance Controllers Collection** shown within the [Tree View](#) of a [Child Window](#):

- [Copy/Move](#)
- [Initialise](#)
- [Cut to Clipboard](#)
- [Copy to Clipboard](#)
- [Paste from Clipboard](#)

The **Performance Controllers Collection** Object is only shown within a [Tree View](#) and is called **Controllers**.

To access all features other than Move and Copy (which you do via "Drag and Drop"), right click over the **Performance Controllers Collection** to activate the **Performance Controllers Collection's** Context Sensitive Menu.

fs.factory supports the following editing operations upon the **Performance Controller Objects** within the [Tree View](#) or [Table View](#) of a [Child Window](#):

- [Copy/Move](#)
- [Initialise](#)
- [Insert](#)
- [Delete](#)
- [Cut to Clipboard](#)
- [Copy to Clipboard](#)
- [Paste from Clipboard](#)

To access all features other than Move and Copy (which you do via "Drag and Drop"), right click over a **Performance Controller** or selection of **Performance Controllers** to activate the **Performance Controller's** Context Sensitive Menu.

Performance Formant Sequence Editing Features

fs.factory supports the following editing operations upon a **Performance Formant Sequence** shown within the [Tree View](#) of a [Child Window](#):

- [Copy/Move](#)
- [Initialise](#)
- [Cut to Clipboard](#)
- [Copy to Clipboard](#)
- [Paste from Clipboard](#)

The **Performance Formant Sequence** Object is only shown within a [Tree View](#) and is called **Formant Sequence**.

To access all features other than Move and Copy (which you do via "Drag and Drop"), right click over the **Performance Formant Sequence** to activate the **Performance Formant Sequence's** Context Sensitive Menu.

System Settings Editing Features

fs.factory supports the following editing operations upon the **System Settings** Object shown within the [Tree View](#) of a [Child Window](#):

- [Copy/Move](#)
- [Initialise](#)
- [Cut to Clipboard](#)
- [Copy to Clipboard](#)
- [Paste from Clipboard](#)

The **System Settings** Object is only shown within a [Tree View](#) and is called **System Settings**.

To access all features other than Move and Copy (which you do via "Drag and Drop"), right click over the **System Settings** Object to activate its Context Sensitive Menu.

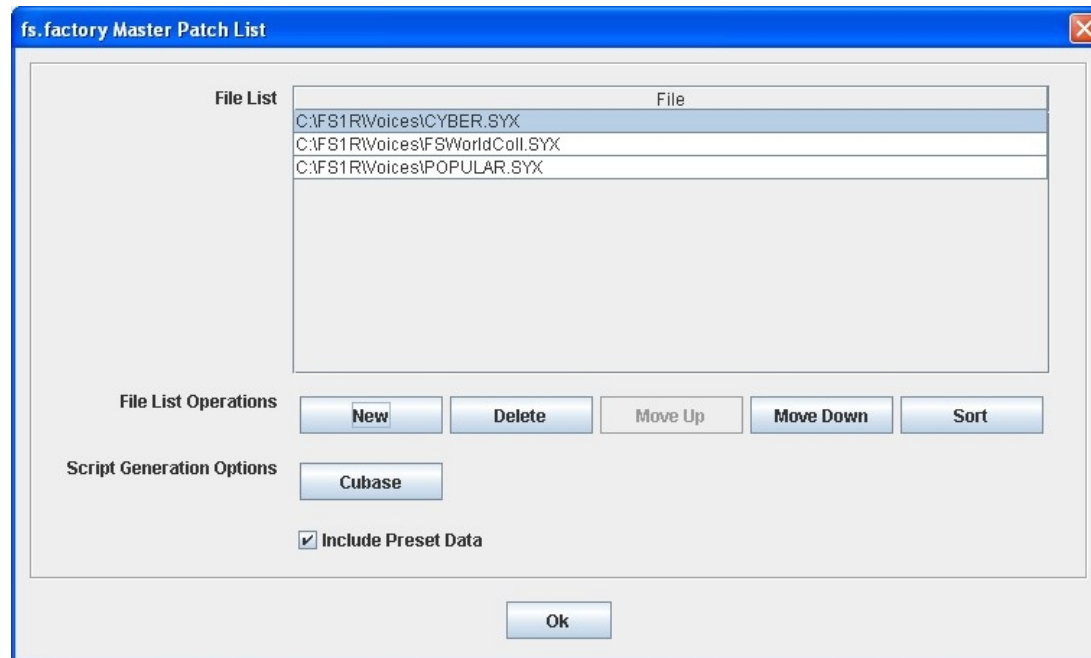
Master Patch List

The Master Patch List Dialog is found on the [Tools](#) menu.

This feature is only available if your copy of fs.factory is [registered](#).

The Master Patch List Dialog provides a means for you to generate a single patch list from a list of files. Currently only Cubase Patch Scripts can be generated, but future versions may support other sequencers.

The Master Patch List dialog is shown below:



This dialog has the following options:

File List	The list of files to incorporate into a single patch list. If you click on one of the lines then you can edit the file either by typing or by using the [...] button to the right of the line to bring up a file selector dialog. Note, if you are editing a line, and you are finished, you need to select another line, or press the RETURN key for the changes to be stored.
New	Inserts a new line in the file list.
Delete	Deletes the currently selected line in the file list. If no line is selected this control is disabled.
Move Up	Moves the currently selected line in the file list up one line. If no line is selected or the selected line is the first in the list then this control is disabled.
Move Down	Moves the currently selected line in the file list down one line. If no line is selected or the selected line is the last in the list then this control is disabled.
Sort	Sorts the lines into ascending alphabetical order
Cubase	Exports the files identified in the file list to a Cubase format patch script file, which is compatible with Cubase VST/SX/SL/SE.
Include Preset Data	When this option is checked, the FS1R Preset Performances are exported at the start of the patch list.
OK	Closes the dialog.

Generating The Cubase Master Patch List

When you generate a Cubase Patch Script, it is written to the directory specified by the **Cubase Patch Script Directory** field in the [Misc Preferences](#) Tab of the [Preferences](#) Dialog. You can set this field up to export the master patch list directly to the directory read by Cubase upon startup. This directory on my system is **C:\Documents and Settings\Derek\Application Data\Steinberg\Cubase SX 3\Scripts\Patchnames\inactive\yamaha** where "C:" is the root drive that Cubase is installed on, "Derek" is my Windows user name, and "Cubase SX 3" is my version of Cubase. You will need to vary these according to your system drive and of course your own user name and version of Cubase.

By default the **Application Data** folder is hidden in Windows Explorer, so you may not see this folder first of all. If you cannot see the folder:

1. In Windows Explorer select **Folder Options** from the **Tools** menu and click the **View** tab.
2. Look down the **Advanced Settings** list and find the **Hidden Files and Folders** option.
3. Select the **Show Hidden Files and Folders** sub option.
4. Select **OK** to close the dialog.

Cubase only looks for and reads patch scripts when it starts up, so if you're in Cubase after generating the patch script then exit Cubase and start it up again.

Configuring Cubase to Use the Master Patch List

The patch scripts generated by fs.factory should be compatible with Cubase VST/SX/SL/SE. The instructions given below are for Cubase SX, which is the version I use. Consult your Cubase documentation for how to install patch scripts if you have a different version.

Within Cubase:

1. Select **MIDI Device Manager** from the **Devices** Menu.
2. Click on the **Install Device** button.
3. Click on the **FS1R - Master Patch List** option (this is the fs.factory generated file). At the bottom of this dialog, select your output MIDI port that the FS1R is connected to. You can now close this dialog. If you cannot see the **FS1R - Master Patch List** then you have not placed it in the right folder.

This installs the patch list within Cubase and allows you to use it elsewhere within the application.

In the main Cubase screen, select or create a MIDI track that you wish to be used with the FS1R. In the **Inspector** window (the panel to the left of the main window) click on the **out** control and you should now be able to see and select the **FS1R - Master Patch List** option amongst the MIDI ports. Also ensure the MIDI channel number for the track matches the FS1R channel number.

Now when you click in the **Programs** control, just below the **out** control, you'll see a drop down list containing all of the FS1R Voices names generated by fs.factory.

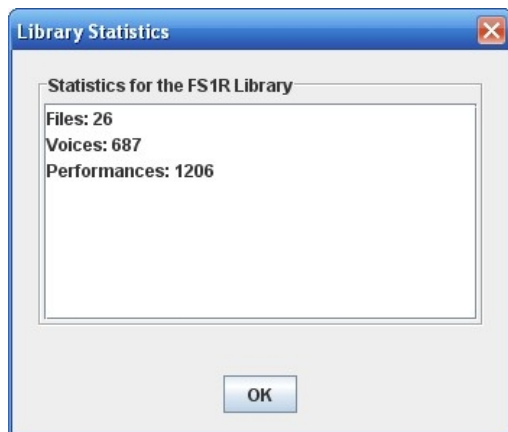
You can now scroll through the lists to find a Voice, and you can also type in filter text to quickly look for a Voice.

Library Statistics

The Library Statistics menu option is found on the [Tools](#) menu.

This feature is only available if your copy of fs.factory is [registered](#).

The Library Statistics Dialog provides a means for you to see a summary of the contents of the Library.



Batch Import To Library

The Batch Import To Library Wizard is found on the [Tools](#) menu.

This feature is only available if your copy of fs.factory is [registered](#).

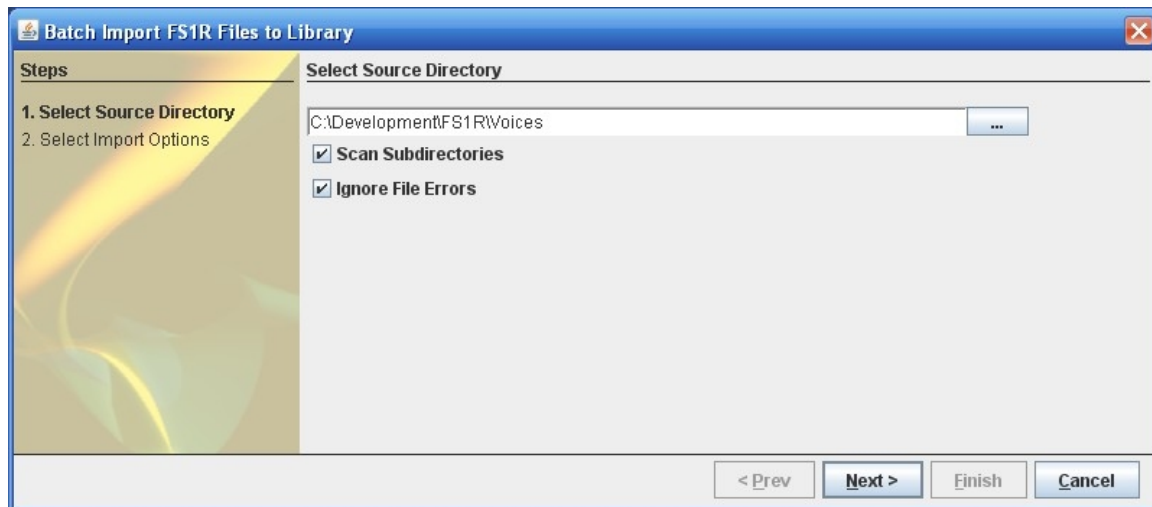
The Batch Import To Library Wizard provides a means for you to import several FS1R files to the library in one go.

The Batch Import To Library Wizard has two pages to navigate through:

- The Select Source Directory Page
- The Select Destination Directory Page

Select Source Directory Page

The Select Source Directory Page is shown below

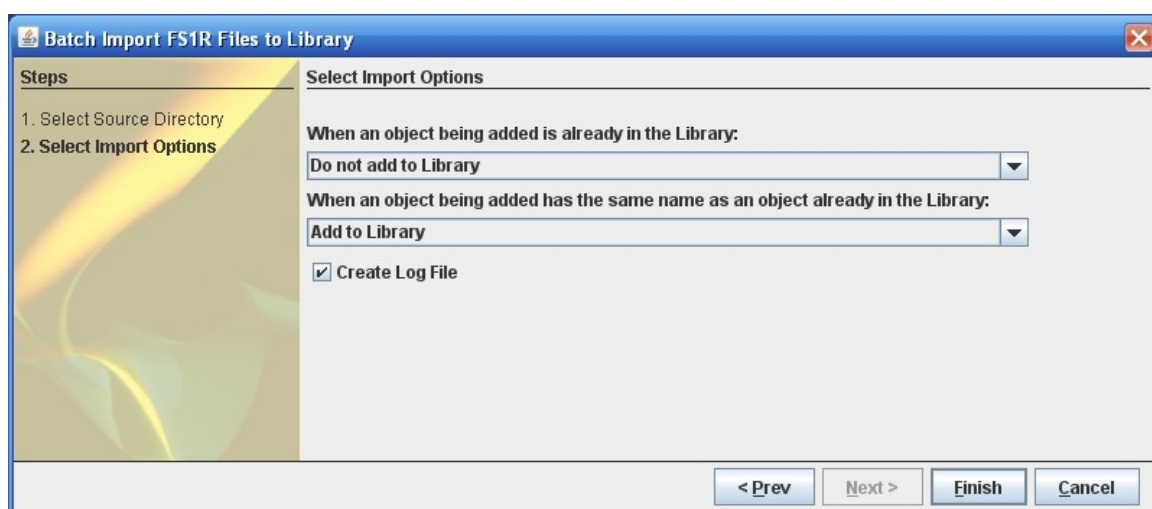


This page has the following options

Source Directory	<p>You can type the name of the source directory in this control.</p> <p>Or if you click the [...] button to the right of the line, this will bring up a file selector dialog.</p>
Scan Subdirectories	<p>If this control is checked, then the Batch Converter will also include any subdirectories that it finds within the source directory when looking for files to convert.</p> <p>If this control is not checked then any subdirectories in the source directory will be ignored.</p>
Ignore File Errors	<p>If this control is not checked then any errors detected during file loading will halt the conversion process.</p> <p>If this control is checked then these errors are ignored, but are logged if logging is enabled.</p>

Select Destination Directory Page

The Select Destination Directory Page is shown below



This page has the following options

When an Object being added is already in the Library	<p>Provides the action to do if an Object is added to the Library and there is already an identical Object in the library. The choices are:</p> <ul style="list-style-type: none"> • Add to Library (with a new name)
---	--

	<ul style="list-style-type: none"> • Do not add to Library • Overwrite Object in the Library
When an Object being added already has the same name as an Object in the Library	Provides the action to do if an Object is added to the Library and there is already an Object in the library with the same name. The choices are: <ul style="list-style-type: none"> • Add to Library (with a new name) • Do not add to Library • Overwrite Object in the Library
Create Log File	If this control is checked then a log file is created in the destination directory. This log file is called "Log File.txt", and can be opened with any text editor

Using the Batch Importer

Using the importer is quite simple.

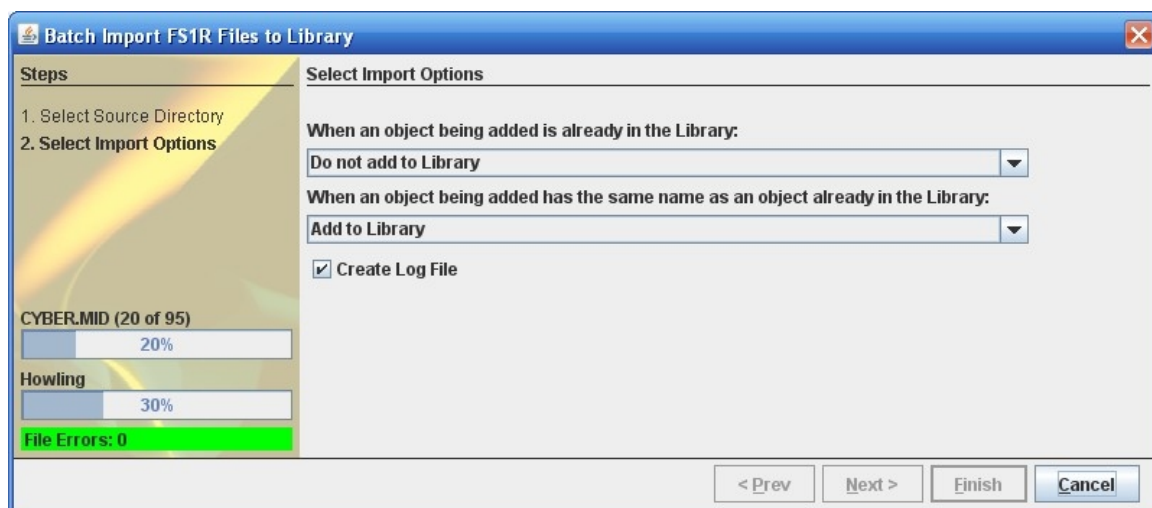
Importing an FS1R file takes about 20 seconds, so if you have a lot of files to import, be prepared to leave the importer running for a while!

The importer is a simple "Wizard" and you can step through the choice pages using the **Prev** and **Next** buttons, or exit the Wizard using the **Cancel** Button

Select the source and destination directory options and once that is done click on the **Finish** button to start the Batch Import Wizard.

The Wizard will not allow you to select a directory that doesn't exist.

Once the Wizard starts the progress of importing files is shown in the information pane.

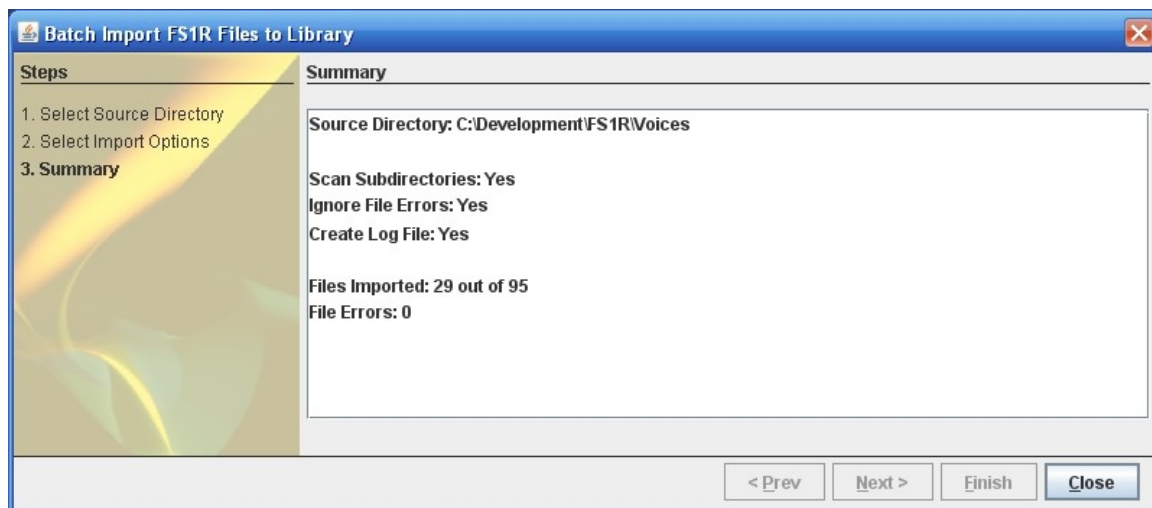


There is a progress bar that shows the progress for all the files that the importer has detected, and a progress bar for the objects in the file currently being imported.

The Wizard also shows how many file errors have been encountered (assuming you have set the options to ignore File errors).

You can cancel the import at any time by pressing the **Cancel** button, but you may need to wait for fs.factory to finish the current file import before the batch conversion is cancelled.

Once completed, a summary results page is shown that summarises the import.



The Wizard can be dismissed by clicking the **Close** button.

You can check the results of the import by opening the **Log File.txt** file (assuming you left logging enabled).

The log file is a simple text file that lists each source file and whether any errors were detected.

All errors are preceded by ** (two stars), so you can use your text editor's find/search facilities to look for ** to quickly find any errors.

Batch Import DX7 Files

The Batch Import DX7 Files Wizard is found on the [Tools](#) menu.

This feature is only available if your copy of fs.factory is [registered](#).

The Batch Import DX7 Files Wizard provides a means for you to import several DX7 SYSEX files and convert them to FS1R SYSEX files.

The Batch Import DX7 Files Wizard has two pages to navigate through:

- The Select Source Directory Page
- The Select Destination Directory Page

Select Source Directory Page

The Select Source Directory Page is shown below



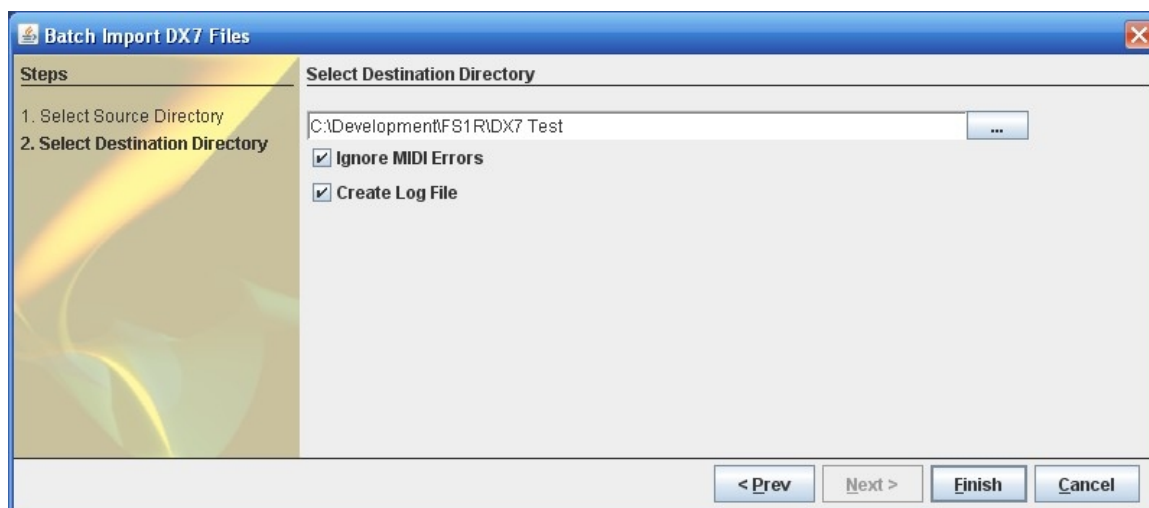
This page has the following options

Source Directory	You can type the name of the source directory in this control. Or if you click the [...] button to the right of the line, this will bring up a file selector dialog.
Scan Subdirectories	

	<p>If this control is checked, then the Batch Converter will also include any subdirectories that it finds within the source directory when looking for files to convert.</p> <p>If this control is not checked then any subdirectories in the source directory will be ignored.</p>
Ignore File CRC Errors	<p>If this control is not checked then any errors detected during file loading will halt the conversion process.</p> <p>If this control is checked then these errors are ignored, but are logged if logging is enabled.</p> <p>It's recommended that this option is set, as there are many DX7 files on the Internet with checksum errors</p>

Select Destination Directory Page

The Select Destination Directory Page is shown below



This page has the following options

Destination Directory	<p>You can type the name of the destination directory in this control.</p> <p>Or if you click the [...] button to the right of the line, this will bring up a file selector dialog.</p>
Ignore MIDI Errors	<p>If this control is not checked then any MIDI errors detected during conversion will halt the conversion process.</p> <p>If this control is checked then these errors are ignored, but logged if logging is enabled.</p>
Create Log File	<p>If this control is checked then a log file is created in the destination directory.</p> <p>This log file is called "Log File.txt", and can be opened with any text editor</p>

Using the Batch Importer

Using the importer is quite simple, but note that your FS1R must be connected and correctly set up before use as the converter works by sending a DX7 voice to the FS1R and reading the voice back in FS1R format from the FS1R edit buffer.

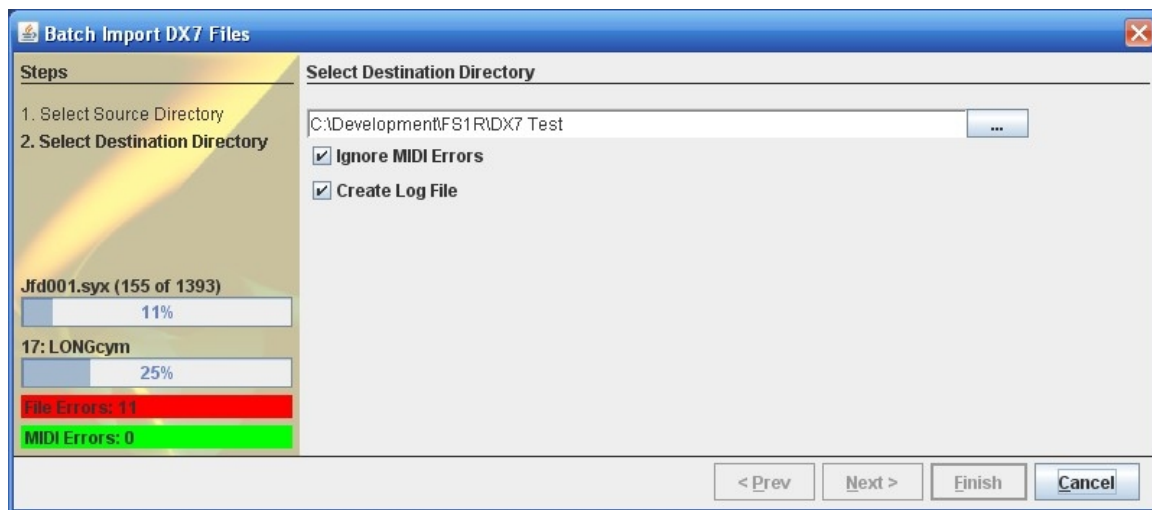
Converting a file of 32 DX7 voices takes about 3 minutes, so if you have a lot of files to convert, be prepared to leave the converter running for a while!

The converter is a simple "Wizard" and you can step through the choice pages using the **Prev** and **Next** buttons, or exit the Wizard using the **Cancel** Button

Select the source and destination directory options and once that is done click on the **Finish** button to start the Batch Import Wizard.

The Wizard will not allow you to select a directory that doesn't exist, and the source and destination directories must be different to prevent you from accidentally overwriting the source DX7 files.

Once the Wizard starts the progress of converting files is shown in the information pane.

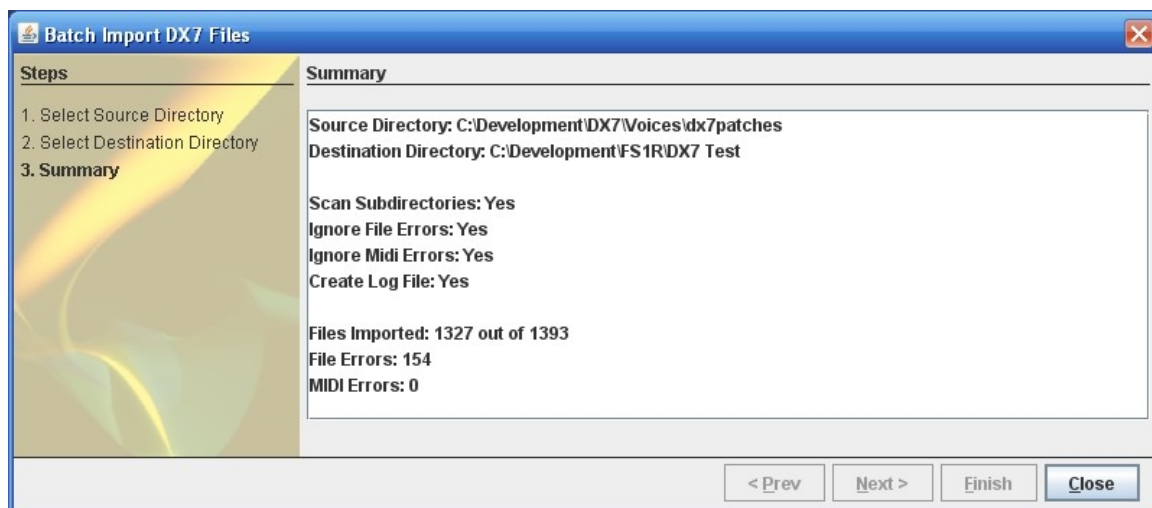


There is a progress bar that shows the progress for all the files that the importer has detected, and a progress bar for the voices in the file currently being converted.

The Wizard also shows how many file CRC and MIDI errors have been encountered (assuming you have set the options to ignore File and MIDI errors).

You can cancel the conversion at any time by pressing the **Cancel** button, but you may need to wait for fs.factory to finish the current conversion before the batch conversion is cancelled.

Once completed, a summary results page is shown that summarises the conversion.



The Wizard can be dismissed by clicking the **Close** button.

You can check the results of the conversion by opening the **Log File.txt** file (assuming you left logging enabled).

The log file is a simple text file that lists each source file and whether any errors were detected.

All errors are preceded by ** (two stars), so you can use your text editors find/search facilities to look for ** to quickly find any errors.

Preferences

The fs.factory preferences are accessed via the [View](#) menu **Preferences ...** option, or the  button on the [Toolbar](#).

Selecting this option opens a Tabbed dialog with the following tabs which group related parameters:

- [Performance Preferences](#)
- [Check Preferences](#)
- [Default View Preferences](#)
- [MIDI Preferences](#)
- [Library Preferences](#)
- [Miscellaneous Preferences](#)

To view and modify a set of parameters, click on the relevant tab.

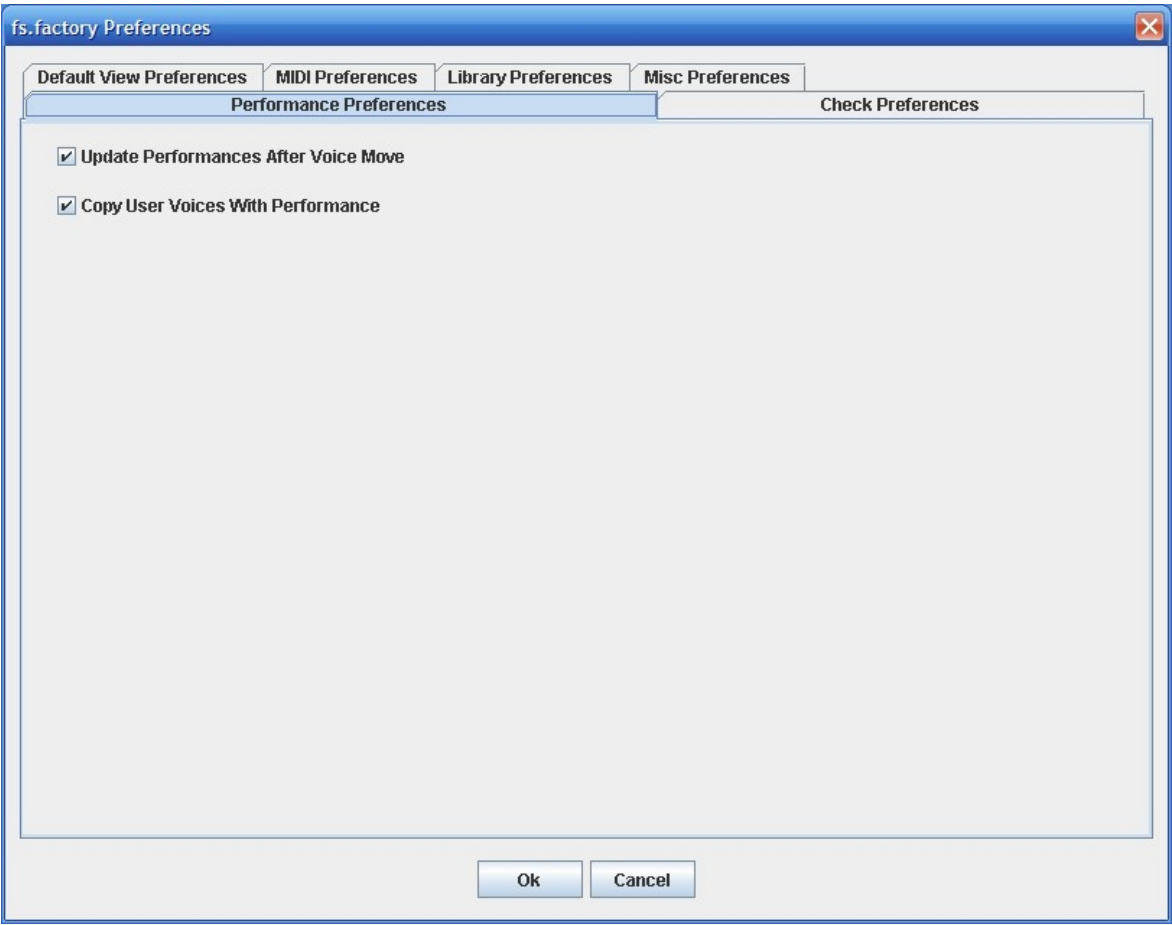
Note: The options to update Performances following a Voice move within the same file also apply when Voices are inserted, deleted and sorted.

Note: The options to copy referenced Voices with "parent" Performances work by:

- Checking the destination file to see if the referenced Voice exists
- If it does then the parent Performance is updated after being moved to point to the existing Voice in the destination file
- If not then fs.factory checks to see if a blank or empty Voice is present in the destination file
- If a blank Voice is found then the child Voice is moved or copied and the parent Voice is updated after being moved to point to the new Voice in the destination file
- If no blank Voice is found the fs.factory gives up. Note this may result in a Partial edit (e.g. it may have only been possible to copy a subset of Performances due to the amount of free Voices in the destination file)
- The Voices are only ever copied irrespective of whether the parent Performance is being moved or copied. This is to avoid the problem that would occur when a Voice is moved, where the source Voice (which would have been initialised after the move) is also referenced by other Performances

Performance Preferences

The Performance Preferences tab is shown below:

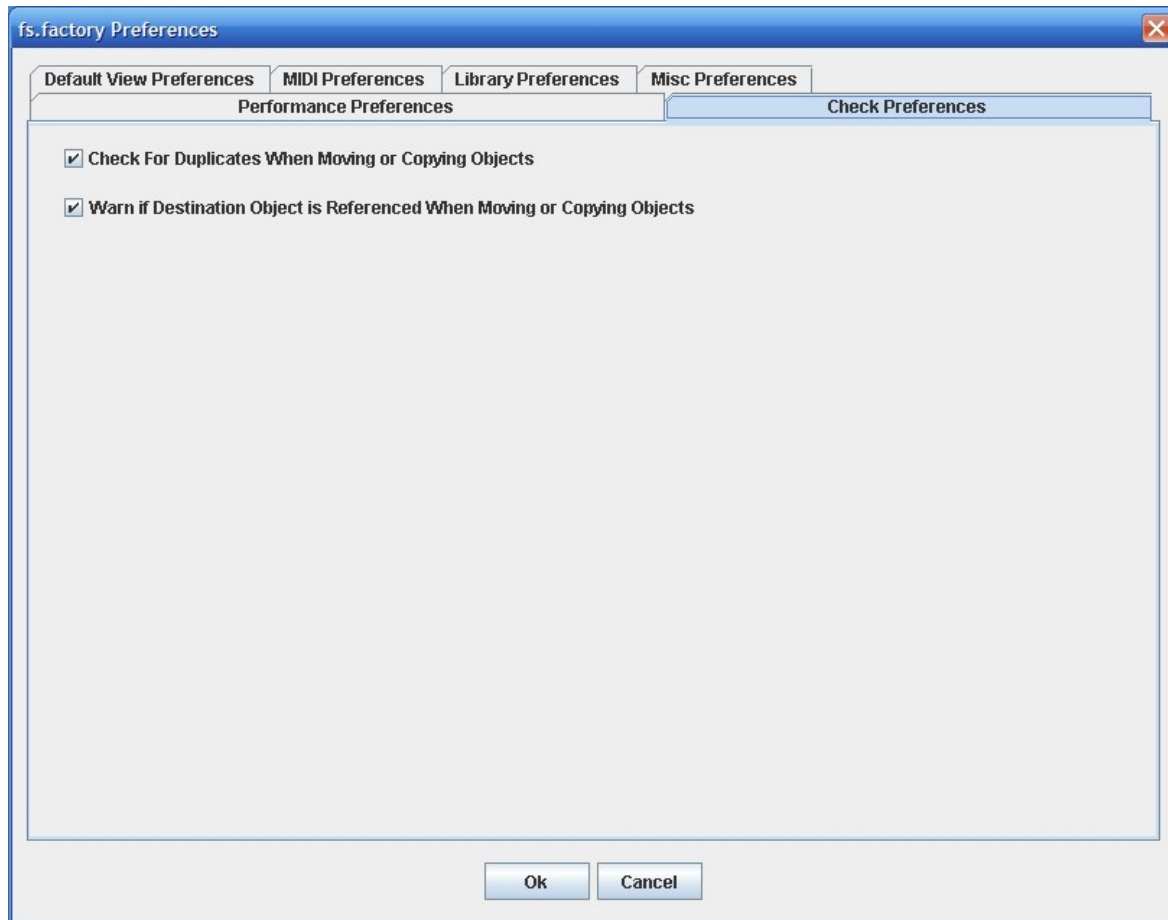


This tab has the following options:

Update Performances/Parts After Voice Move	If you move a Voice within an SYSEX file then the Performances and their Parts are updated to ensure that the correct references to User Voices are maintained.
Copy User Voices With Performance	If you move or copy a Performance from an SYSEX file to another SYSEX file, then any User Voices referenced by the Performance and its Parts are also copied to the destination file if the Voices are not already present in the destination file.

Check Preferences

The Check Preferences tab is shown below:

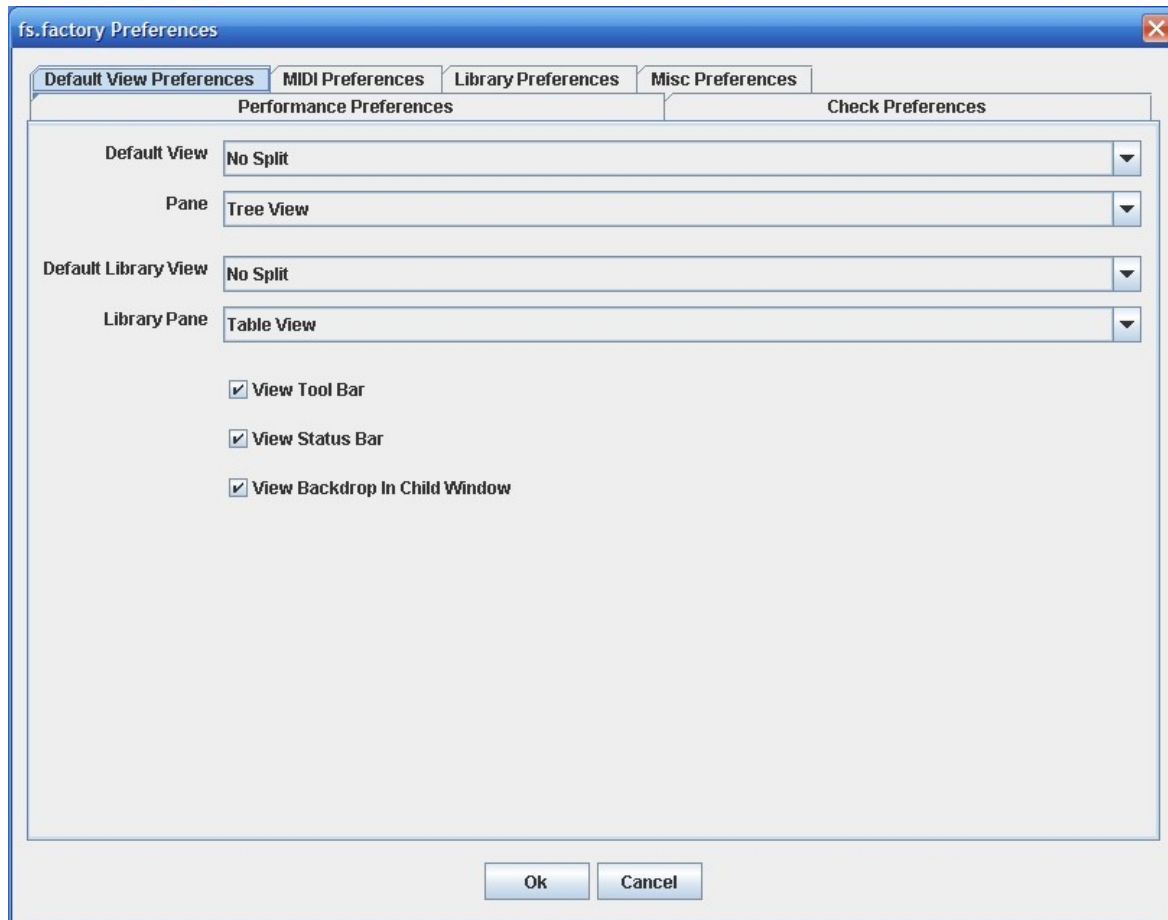


This tab has the following options:

Check For Duplicates When Moving or Copying Objects	If you move or copy an Object to a destination file and the Object already exists then a warning is presented giving you the option to continue or cancel the operation.
Warn if Destination Object is Referenced When Moving or Copying Objects	If you move or copy an Object and it is overwriting an Object that is being referenced, or you are deleting a referenced Object, then a warning is presented giving you the option to continue or cancel the operation.

Default View Preferences

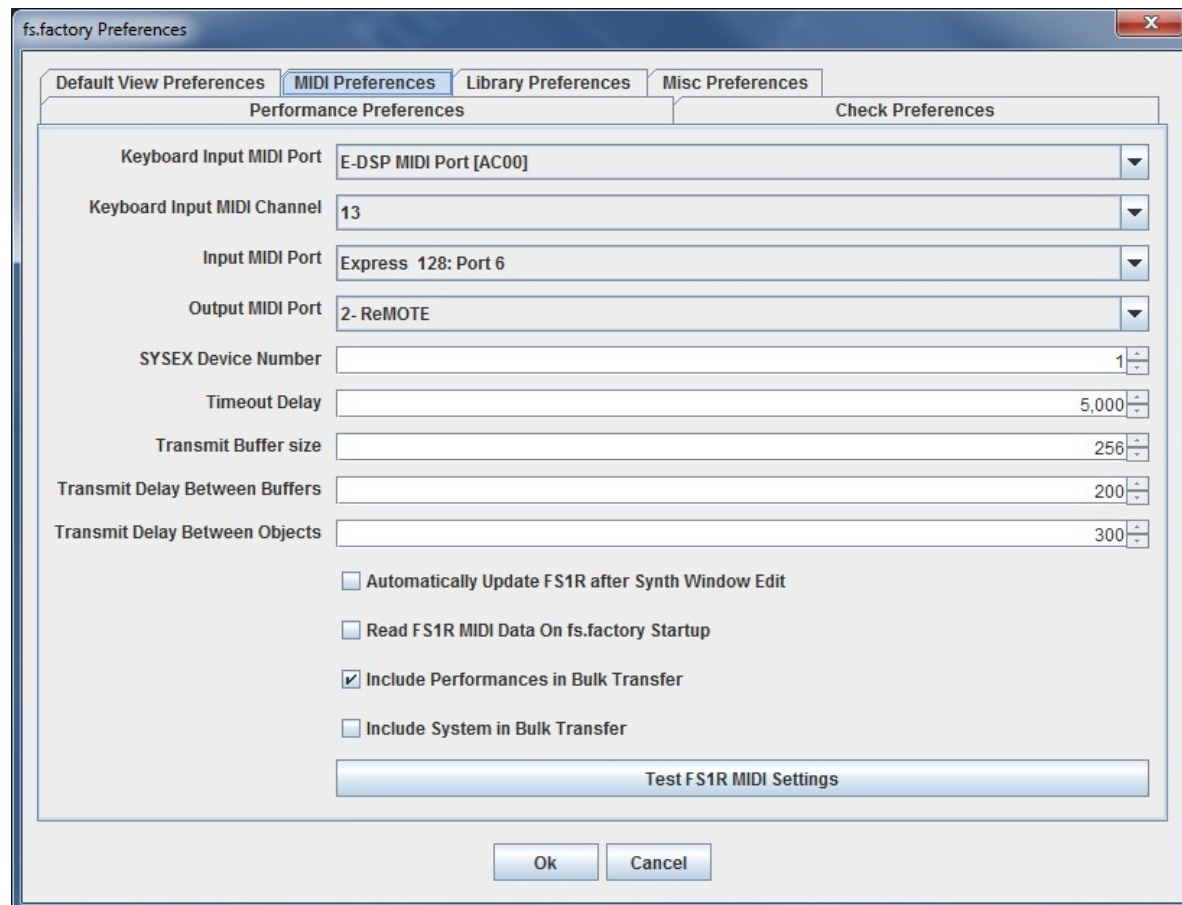
The Default View Preferences tab is shown below:



Default View	<p>Defines the type of view that is applied to a Child Window when it is first opened.</p> <p>The following options are available:</p> <ul style="list-style-type: none"> • No Split • Horizontal Split • Vertical Split
Pane/Left Pane/Top Pane	<p>Defines the type of view shown in the single pane of an unsplit view, the left pane of a horizontally split view or the top pane of a vertically split view.</p> <p>The following options are available:</p> <ul style="list-style-type: none"> • Tree View • Table View
Right Pane/Bottom Pane	<p>This control is only visible if the Default View option is set to either Horizontal Split or Vertical Split.</p> <p>Defines the type of view shown in the right pane of a horizontally split view or the bottom pane of a vertically split view.</p> <p>The following options are available:</p> <ul style="list-style-type: none"> • Tree View • Table View
View Tool Bar	Controls if the toolbar is visible at startup.
View Status Bar	Controls if the status bar is visible at startup.
View Backdrop In Child Window	<p>This option controls if the image backdrop is displayed in Child Windows.</p> <p>You may wish to turn off this option if you find the scrolling of the Child Window is slow on your machine.</p>

MIDI Preferences

The MIDI Preferences tab is shown below:



This tab has the following options:

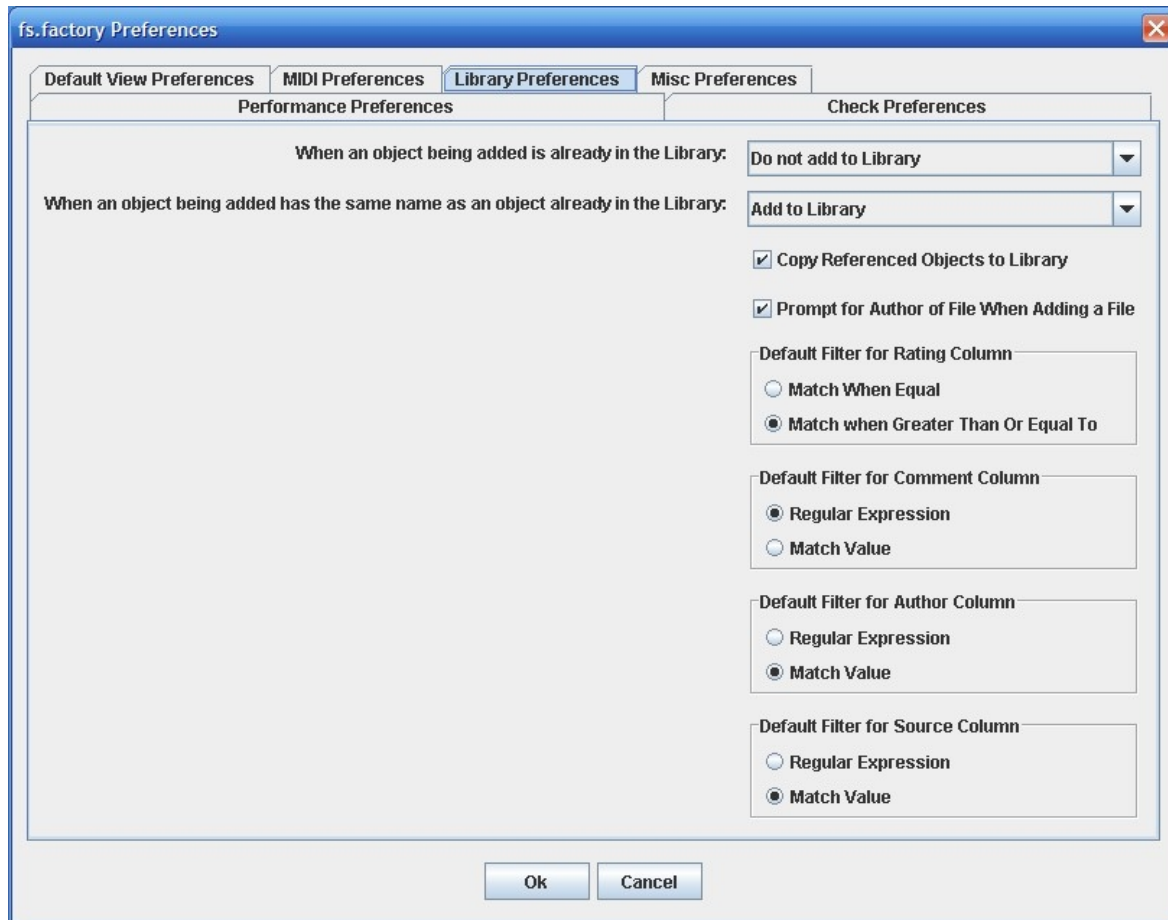
Keyboard Input MIDI Port	Sets the port used for accepting MIDI data from a keyboard and routing it to the output MIDI port using the MIDI Router Dialog .
Keyboard Input MIDI Channel	Sets the channel to be used for transmitting MIDI data using the MIDI Router Dialog . The first option Use Source Channel in the drop down list, means that the MIDI channel from the source device is not altered.
Input MIDI Port	Sets the port used for MIDI input from the available ports.
Output MIDI Port	Sets the port used for MIDI output from the available ports.
SYSEX Device Number	Sets the SYSEX device number used for SYSEX transfers. This must match the Device No value set in the FS1R's MIDI pages. If the FS1R Device No is set to all then it will receive all FS1R SYSEX messages irrespective of the device number in the message.
Timeout Delay	Sets the time that fs.factory waits for a response from the FS1R before timing out and reporting an error. The value is specified in milliseconds.
Transmit Buffer Size	Sets the size of the transmit buffer used for sending data to the FS1R. Some MIDI interfaces don't like data coming in big chunks and you may need to set this to get a reliable transfer of data. The value is specified in milliseconds.
Transmit Delay Between Buffers	This sets the delay that fs.factory waits for between sending buffer sized data packets. The value is specified in milliseconds.
Transmit Delay Between Objects	This sets the delay that fs.factory waits for after sending a complete object. The value is specified in milliseconds.
Automatically Update FS1R after Synth Window Edit	When this option is checked, if the FS1R Synthesizer Window is edited then the edited data will be automatically sent to the FS1R.
Read FS1R MIDI Data On fs.factory Startup	When this option is checked the Voices and Performances (if enabled) are read from the FS1R during the fs.factory startup phase.
Include Performances in Bulk Transfer	When this option is checked, the Performances are included in bulk transfers. You may wish to uncheck this option if you don't use Performances.
Test FS1R MIDI Settings	Tests to see if MIDI communications is working using the specified values.

The **Transmit Buffer Size**, **Transmit Delay Between Buffers** and **Transmit Delay Between Objects** values should not require adjustment. fs.factory sends data to the FS1R by dividing the data into packets the size of which are specified by the **Transmit Buffer Size** value. When fs.factory sends a packet it waits for the time

period specified by **Transmit Delay Between Buffers** before sending the next packet, and it waits for the time period specified by **Transmit Delay Between Objects** after the last packet is sent. The delay parameters are specified in milliseconds. You may need to adjust these values (smaller buffers, longer delays) if communications is not reliable, and you may if you wish adjust these values (larger buffers, smaller delays) to maximise data transfer performance. If you adjust these values, please ensure that you test the transfer to ensure it is reliable, *otherwise you may risk losing data*. Note: Some MIDI interfaces do not like large packet sizes: I recently upgraded to a MOTU interface and ran into problems with MIDI export until I altered fs.factory to send messages in small chunks defined by the above parameters!

Library Preferences

The Library Preferences tab is shown below:



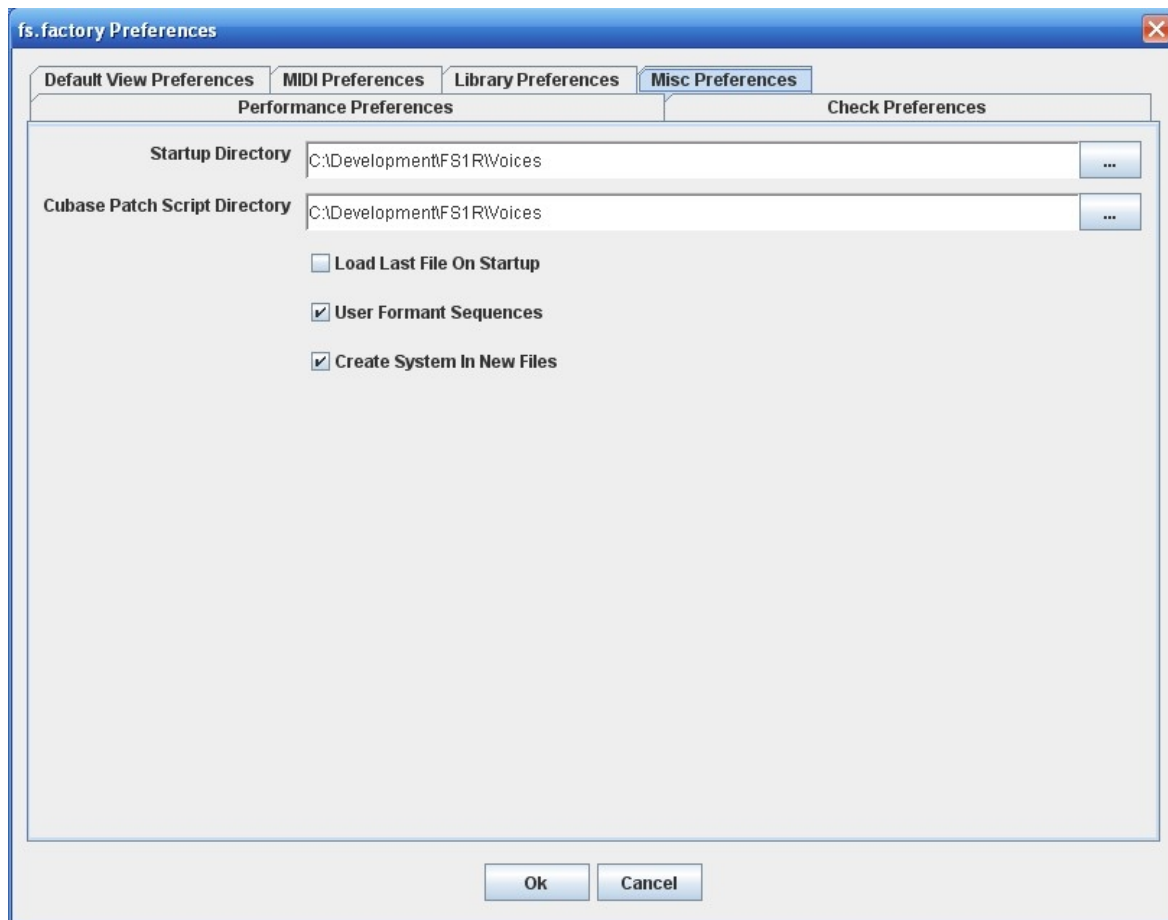
This tab has the following options:

When an Object being added is already in the Library	Provides the action to do if an Object is added to the Library and there is already an identical Object in the library. The choices are: <ul style="list-style-type: none"> • Add to Library (with a new name) • Do not add to Library • Overwrite Object in the Library • Ask What To Do
When an Object being added already has the same name as an Object in the Library	Provides the action to do if an Object is added to the Library and there is already an Object in the library with the same name. The choices are: <ul style="list-style-type: none"> • Add to Library (with a new name) • Do not add to Library • Overwrite Object in the Library • Ask What To Do
Copy Referenced Objects to Library	If this Option is checked, then any Objects being referenced by an Object being added to the Library are also added to the Library.
Prompt for Author of File When Adding a File	If this Option is checked then fs.factory will ask for the Author of the file if one has not already been entered.
Default Filter for Rating Column	Sets the default filter type for the Rating column. The choices are: <ul style="list-style-type: none"> • Regular Expression (can contain Perl Regular Expressions) • Match Value (can only be selected using an existing value)

Default Filter for the Comment Column	Sets the default filter type for the Comment column. The choices are: <ul style="list-style-type: none"> • Regular Expression (can contain Perl Regular Expressions) • Match Value (can only be selected using an existing value)
Default Filter for the Author Column	Sets the default filter type for the Author column. The choices are: <ul style="list-style-type: none"> • Regular Expression (can contain Perl Regular Expressions) • Match Value (can only be selected using an existing value)
Default Filter for the Source Column	Sets the default filter type for the Source column. The choices are: <ul style="list-style-type: none"> • Regular Expression (can contain Perl Regular Expressions) • Match Value (can only be selected using an existing value)

Miscellaneous Preferences

The Miscellaneous Preferences tab is shown below:




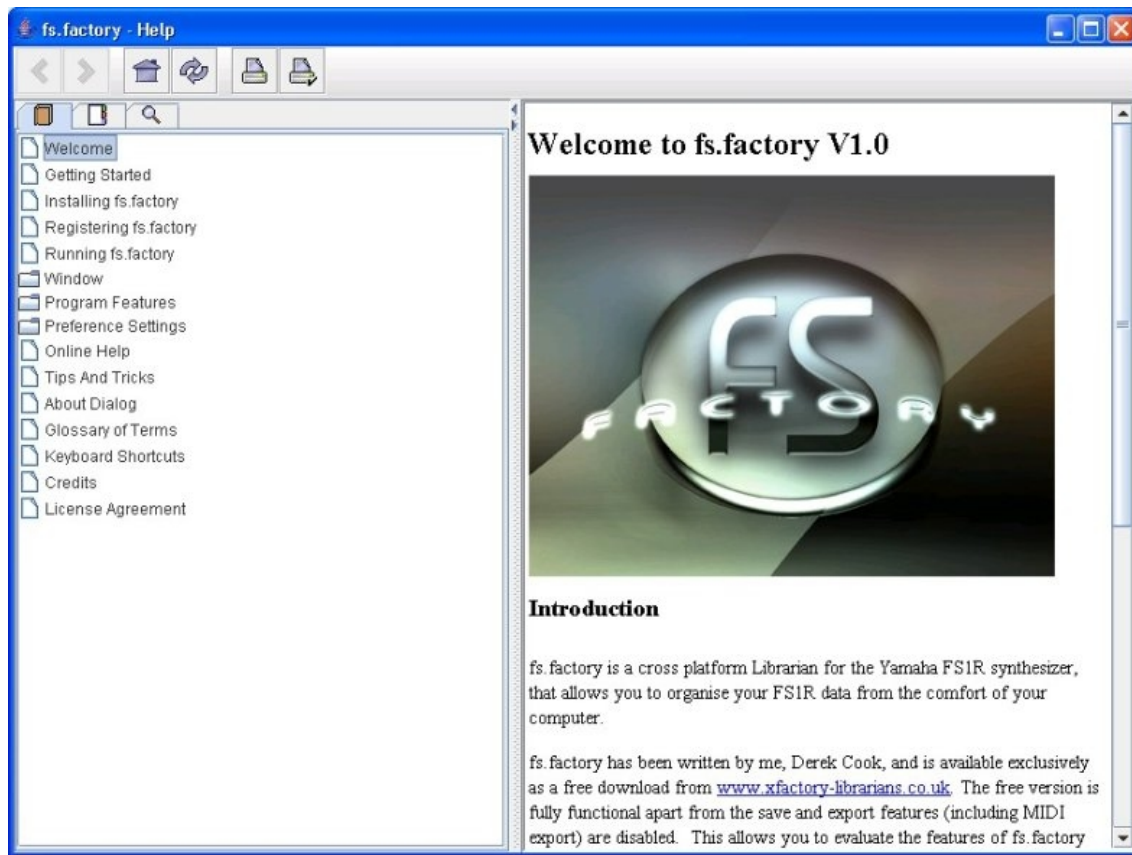
This tab has the following options:

Startup Directory	<p>Allows the startup directory to be specified. Note: no validation is performed on this pathname, so please ensure it is valid. I may add validation later.</p> <p>The [...] button to the right of the field brings up a dialog that allows you to select the directory instead of typing it in.</p>
Cubase Patch Script Directory	<p>Specifies the directory where Cubase patch scripts are written. Note: no validation is performed on this pathname, so please ensure it is valid. I may add validation later.</p> <p>The [...] button to the right of the field brings up a dialog that allows you to select the directory instead of typing it in.</p>
Load Last File On Startup	<p>Controls if the last file opened in the previous session is automatically loaded when dx.factory is next invoked.</p>
User Formant Sequences	<p>If this is checked, then fs.factory will only send and receive the first 64 User Voices to/from the FS1R.</p>
Create System in New Files	<p>If this is checked, then fs.factory will create a System Settings node in new files when they are created.</p>

Online Help

fs.factory provides a full online version of the fs.factory manual.

If you select **Help ...** from the [Help Menu](#) or the  button on the [Tool Bar](#), the Help Window is opened.









The Help Window works just like a web browser window, so its operation should be quite familiar to you.

The left pane of the Help Window shows a tabbed navigation pane to allow you to quickly navigate to a topic, whilst the right hand pane shows the help topic.

The navigation pane can show three different views, depending on which tab you select:


-  Displays the Table of Contents Navigation Pane, providing a structured list of fs.factory topics
-  Displays the Index Navigation Pane, providing an indexed list of fs.factory topics
-  Displays the Search Navigation Pane, allowing you to search the help topics for keywords

The Help Window has the following Tool Bar buttons:

-  Navigates backwards to the last page in the access sequence. If you press and hold the mouse button over this button, you will get a list of accessed pages
-  Navigates forwards to the next page in the access sequence. If you press and hold the mouse button over this button, you will get a list of accessed pages
-  Selects the home page
-  Refreshes the current page
-  Prints the current page
-  Displays the print settings dialog

Context Sensitive Help

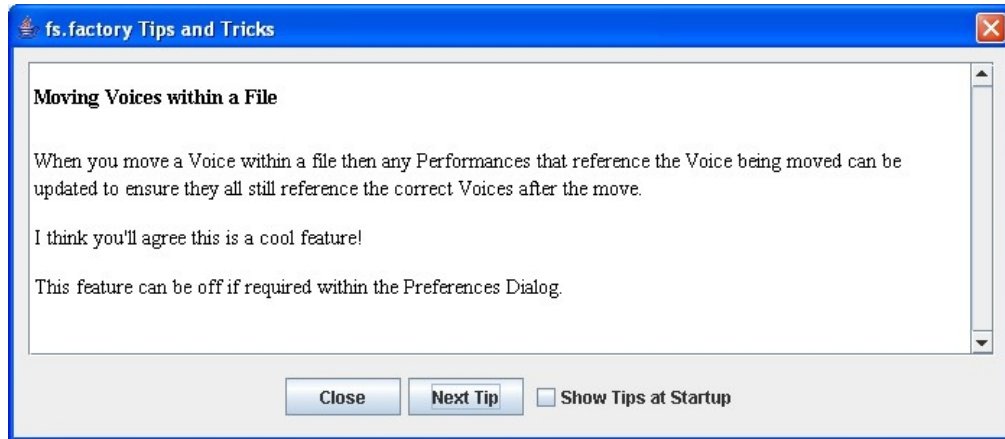
You can access context sensitive help by:

- pressing the your Computer Platform's **Help Key** (**F1** on the PC platform), which will load the help page associated with the Component within the fs.factory [Window](#) that currently has **Focus** (is responding to the keyboard and mouse).
- pressing the  button on the [Tool Bar](#) and the clicking over the item of interest

You can press the **Help Key** in any fs.factory Dialog to access the relevant help page for the Dialog.

Tips and Tricks

The fs.factory tips and tricks dialog is shown below:



This dialog has the following controls:

Close	Closes the Tips and Tricks Dialog
Next Tip	Selects the next tip in sequence
Show Tips at Startup	If checked then when fs.factory starts up, the Tips and Tricks Dialog is automatically opened

List of Tips and Tricks

Just in case you want the tips and tricks shown by the dialog as one single list, here they are.

Double Clicking a voice

If you double click a voice in a file or the library, it will be sent to the synth's edit buffer. If you triple click instead, the MIDI Router dialog will be opened after the voice is sent to the synth's edit buffer.

Library Support

fs.factory provides a Library facility that allows you to store all your data in one place, and use filtering and sorting facilities to locate the data that you want.

(NOTE: Library features are available only to registered users).

MIDI Support

fs.factory supports the transfer of Voices and Performances between fs.factory and the FS1R via MIDI.

(NOTE: The MIDI export features are available only to registered users).

Context Sensitive Help

If you press the **Help Key** (**F1** on a PC) then you can get context sensitive help, including within Dialogs.

Keyboard Shortcuts

fs.factory supports numerous keyboard shortcuts as an alternative to using the mouse.

Take a look in the online help or the fs.factory manual for details of the supported keyboard shortcuts

Object Colouring

If a Voice is coloured **blue**, then it is being referenced by a Performance.

If you right click over a **blue** Voice you'll find a **"List References"** context menu item, which will show you the Performances that reference this Voice.

Table Sorting

You can sort Voice and Performance Tables by name by clicking in the Table **Name** Column header, and they can be sorted by category by clicking in the Table **Category** column header.

DX7/DX7II Data Import

Registered users can import DX7 and DX7II data into fs.factory. Note that some DX7II voices may not sound exactly the same as not all additional DX7II voice parameters are supported by the FS1R.

You can only DRAG COPY Certain Objects

If you are trying to perform a drag operation of a Voice onto a Performance Part and are wondering why fs.factory is not allowing you to perform the drag, you must be holding down the CTRL key during the drag. Holding down the CTRL key turns the operation from a **Drag Move** operation to a **Drag Copy** operation.

Sometimes during a drag operation, the only sensible operation that can be undertaken is a copy operation.

Copying/Moving Performances to a Different File

When you copy a Performance to a different file then any Voices it references can also be copied at the same time.

I think you'll agree this is a cool feature!

This feature can be off if required within the Preferences Dialog.

MIDI Router

Press the F12 key and you get a "MIDI Router" popping up which, whilst active, will route MIDI data from the Keyboard MIDI Port through to the Motif Output MIDI Port. This allows you to have the USB connection selected on the Motif, whilst allow you to play data coming from a standard MIDI interface.

Master Patch List

The **Master Patch List** dialog under the **Tools** menu allows you to define a list of files that are exported, along with preset voice definitions, as a master patch list for use in supported sequencers to select patches. Currently only Cubase VST/SX/SE/SL patch lists are supported.

Workspaces

fs.factory allows you to save a Window arrangement as a **Workspace** which you can then recall at a later date.

Moving Voices within a File

When you move a Voice within a file then any Performances that reference the Voice being moved can be updated to ensure they all still reference the correct Voices after the move.

I think you'll agree this is a cool feature!

This feature can be off if required within the Preferences Dialog.

The FS1R Synthesizer Window

fs.factory has a special window called the FS1R Synthesizer Window. This is a special window that represents the FS1R synthesizer itself.

By setting up the MIDI preferences settings you can:

- Automatically import data from the FS1R synth into this FS1R Synthesizer Window when fs.factory starts up
- Automatically export data from the FS1R Synthesizer Window to the FS1R Synth when the data in the FS1R Synthesizer Window is edited

Exporting Cubase/Protools Patch Lists

You can export Patch lists from SYSEX files for use within either Cubase VST, Protools or Sonar.

The relevant options can be found on the **File** Menu under the **Export** option

The Number After An Operator

In the Tree View you may notice that an operator has a number included after it in brackets. This number is the "checksum" value associated with the operator, and is included as a signature and as a simple way of distinguishing between operators.

Exporting Files to MIDI

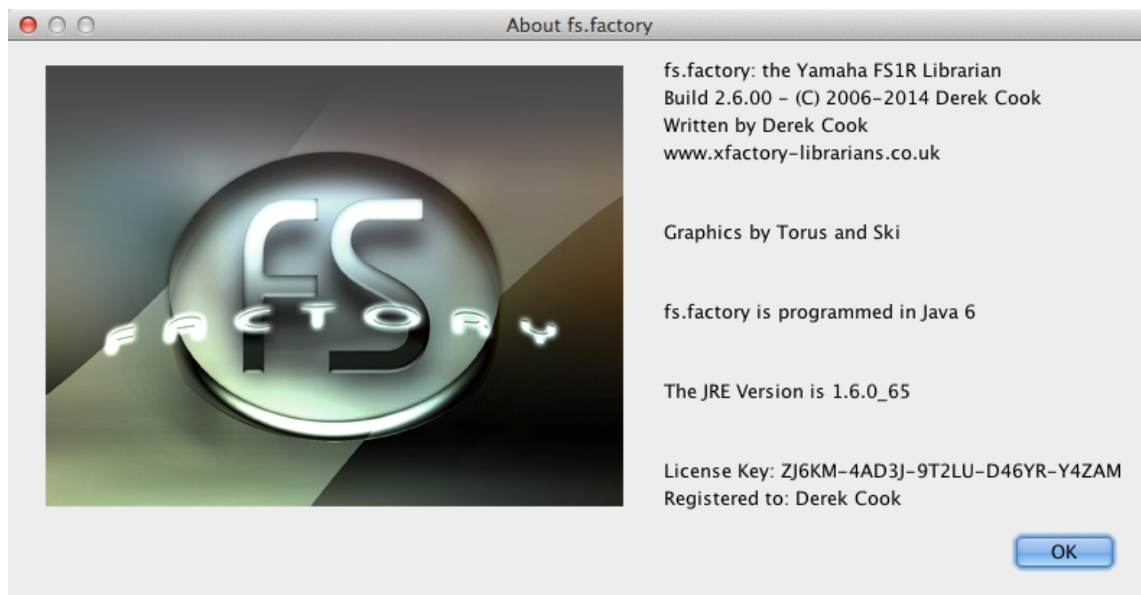
You can export a file directly to MIDI once it is opened. If you do this, then the data being exported is also copied to the FS1R Synthesizer Window.

Importing Files from MIDI

You can import directly from MIDI into a file. If you do this, then the data being imported is also copied to the FS1R Synthesizer Window.

About fs.factory

The about dialog is shown when the **About ...** option from the [Help Menu](#) or the ⓘ button on the [Tool Bar](#) is selected.



The dialog shows some basic information about the program including the version number and the [License](#) status of fs.factory.

It also shows which Java Run Time Environment that fs.factory is running in.

It's also a chance to take a close look at the excellent Splash Graphic provided by Torus!

Glossary

Term	Definition
Child Window	A window associated with an FS1R data file that you have opened that is used to display the contents of the file. Several Child Windows can be open within the fs.factory Desktop .
Clipboard	A temporary storage area used for transferring data within a Child Window or between Child Windows .
Collection	A group of similar and related Objects . For example a Voice Collection stores the 128 Voice Objects that a file can contain
Context Sensitive Help	The ability of the help system to tailor the help being displayed according to where the user pressed the Help key.
Context Sensitive Menu	The popup menu that is displayed in either the Tree View or Table View that provides a set of commands specific to the currently selected Object
Desktop	The area within the fs.factory window where Child Windows can be opened
Drag and Drop	The name for the mechanism that allows a use to move data by dragging it with a mouse and dropping it at a new location.
DRAG MODIFIER	The keyboard key that is held down to turn a Drag and Drop move operation into a copy operation. On the PC platform, the DRAG MODIFIER key is the CTRL (control) key
FS1R Library Window	A special instance of a Child Window that doesn't display data in a file, but which displays the data stored in the FS1R Library .
FS1R Synthesizer Window	A special instance of a Child Window that doesn't display data in a file, but which displays User data imported from the FS1R via MIDI
JRE	Java Run-time Environment. This provides the Java environment which fs.factory needs in order to run. Sun Microsystems provides the JRE for PC systems, and Apple provide their own JRE for MacOS X
Library	A repository where you can store all of your data.
MDI	Multiple Document Interface. The type of user interface used by fs.factory which allows several Windows to be open within the main application window.
Menu Bar	The area of the fs.factory Window that contains the set of menus used for accessing the main functions provided by the application.
MIDI	Musical Instrument Digital Interface. The primary means by which digital data is exchanged in a serial form between synthesizers and computers.
MMJ	A MacOS X specific library that provides the means by which external MIDI devices can be accessed with the Java MIDI framework.
Object	A piece of FS1R data such as a Voice or Performance.
Reference	The means by which the FS1R associates an Object (such as a Voice) with another Object (such as a Performance Part). The reference provides the link between the two, and in the case of the FS1R, the link is simply the number of the referenced Object .
Regular Expression	A system by which certain character sequences are interpreted not as plain text but as commands that can provide a tailored search for occurrences of text
Status Bar	The area of the fs.factory Window that is used to display status information upon the currently selected Child Window .
Table View	A View which displays data in a file arranged in tabulated rows of data
Tool Bar	The area of the fs.factory Window that contains a set of buttons to provide easy access to commonly used commands
Tree View	A View which displays data in a file arranged in a hierarchical tree structure.
View	The means by which the data in a file is viewed. A Child Window provides the view upon an FS1R File that you have opened. The view can be either a Tree View or a Table View . You can have several views open upon the same data, for example when you have split a Child Window .
Workspace	An arrangement of the main fs.factory Window and Child Windows which can be saved for subsequent recall.

Keyboard Short Cuts

fs.factory provides many keyboard shortcuts for navigation and performing editing operations.

In general, navigating between components uses these keys:

- **Tab.** Moves keyboard focus to the next component or to the first member of the next group of components.
- **Ctrl-Tab.** Moves keyboard focus to the next component or to the first member of a group of components when the current component accepts a tab (as in text fields, tables, and tabbed panes).
- **Shift-Tab.** Moves keyboard focus to the previous component or to the first component in the previous group of components.
- **Arrow keys.** Move keyboard focus within the individual components of a group of components--for example, within menu items in a menu or within tabs in a tabbed pane.

The shortcuts are divided into the following categories:

- [Keyboard shortcuts for the Desktop and Child Windows](#)
- [Keyboard shortcuts for Tree Views](#)
- [Keyboard shortcuts for Table Views](#)
- [Keyboard shortcuts for Editing within Tree and Table Views](#)
- [Keyboard shortcuts for the Preferences Dialog](#)
- [Keyboard shortcuts for Text Editing Fields](#)

Keyboard Shortcuts for the Desktop and Child Windows

Action	Keystroke	Notes
New File	Ctrl-N	
Open File	Ctrl-O	
Save File	Ctrl-S	
Save File As	Ctrl-A	
Save All Files	Ctrl-L	
Open Workspace	Ctrl-ALT-O	
Save Workspace	Ctrl-ALT-S	
Tile Horizontally	Ctrl-H	
Tile Vertically	Ctrl-V	
Maximise Windows	Ctrl-M	
Restore Windows	Ctrl-R	
Minimise Windows	Ctrl-I	
Closes Child Window	Ctrl-F4	
Moves Child Window	Ctrl-F7	
Resizes Child Window	Ctrl-F8	
Minimizes Child Window	Ctrl-F9	
Switch to next Child Window on the Desktop	Ctrl-F6	

Keyboard Shortcuts for Tree Views

Action	Keystroke	Notes
Expands current Object	Right arrow	
Collapses current Object, or moves focus to Parent Object	Left arrow	
Moves focus up one Object	Up arrow	
Moves focus down one Object	Down arrow	
Moves focus to first Object in Tree View	Home	
Moves focus to last Object in Tree View	End	
Moves up one view	Page Up	
Moves down one view	Page Down	
Selects all Object in Tree View	Ctrl-A, Ctrl-/	
Deselects all Object in Tree View	Ctrl-\	
Extends selection down	Shift-down arrow	
Extends selection up	Shift-up arrow	
Extends selection to beginning of Tree View	Shift-Home	
Extends selection to end of Tree View	Shift-End	
Extends selection up one view	Shift-PgUp	
Extends selection down one view	Shift-PgDn	

Keyboard Shortcuts for Table Views

Action	Keystroke	Notes
Moves up one row	Up arrow Shift-Return	
Moves down one row	Down arrow Return	
Scrolls up one view	Page Up	
Scrolls down one view	Page Down	
Moves focus and view to first cell in the current row	Home	
Moves focus and view to last cell in the current row	End	
Moves focus and view to first cell in the current column	Ctrl-Home	
Moves focus and view to last cell in the current column	Ctrl-End	
Allows editing in a Category cell	F2, Down Arrow	
Allows editing in a Name cell.	F2	
Resets cell to the state it was in before it was edited	Escape	
Selects entire table	Ctrl-A	
Extends selection up one row	Shift-up arrow	
Extends selection down one row	Shift-down arrow	
Extends selection to beginning of table	Ctrl-Shift-Home	
Extends selection to end of table	Ctrl-Shift-End	
Extends selection up one view	Shift-PgUp	
Extends selection down one view	Shift-PgDn	

Keyboard Editing Short Cuts for both Tree and Table Views

Action	Keystroke	Notes
Undo	Ctrl-Z	
Redo	Ctrl-Y	
Cut	Ctrl-X	
Copy	Ctrl-C	
Paste	Ctrl-V	
Find	Ctrl-F	
Find Next	F3	
Goto	Ctrl-G	
Insert Object	INS	Not allowed on Collections
Delete Object	DEL	Not allowed on Collections
Rename Object	F4	Single Named Object Only
Initialise Object	F5	
List References	F6	Single Named Object Only
Export to MIDI Edit Buffer	F8	Single Voice or Performance Only
Export to MIDI Memory	Shift-F8	Voices or Performances Only
Import from MIDI Edit Buffer	F9	Single Voice or Performance Only
Import from MIDI Memory	Shift-F9	Voices or Performances Only

Keyboard Shortcuts for the Preferences Dialog

Action	Keystroke	Notes
Navigates through tabs	Arrow keys	
Moves from tab to its associated content pane	Ctrl-down arrow	
Moves from content pane to its associated tab	Ctrl-up arrow	

Keyboard Shortcuts for Text Editing Fields

Action	Keystroke	Notes
Moves insertion point one character to the right	Right arrow	
Moves insertion point one character to the left	Left arrow	
Moves insertion point to beginning of next word	Ctrl-right arrow	
Moves insertion point to beginning of previous word	Ctrl-left arrow	
Moves insertion point to beginning of field	Home	
Moves insertion point to end of field	End	
Submits text entry	Enter, Return	
Extends selection to beginning of line	Shift-Home	
Extends selection to end of line	Shift-End	
Extends selection one character to the left	Shift-left arrow	
Extends selection one character to the right	Shift-right arrow	
Extends selection to next word	Shift-Ctrl-right arrow	
Extends selection to previous word	Shift-Ctrl-left arrow	

Credits

- Jim Atfield for general debugging duties, including OSX compatibility, and for also checking out the behaviour of the installer on MAC OSX, and then for loaning me his iMac so that I could sort out some more pervasive issues. I now have my own Mac so I don't have to keep borrowing Jim's, or hassling him for OSX duties anymore, but OSX support all started with Jim's help.

3rd party software used in fs.factory

The following 3rd part software is used to build fs.factory and provide some program features.

CoreMIDI4J License

fs.factory makes use of [CoreMIDI4J](#) to provide MIDI support on OS X, which is issued under the [EPL 1.0 License](#).

Table Filter License

fs.factory makes use of [TableFilter](#) by [Luis M. Pena](#), which is issued under the [MIT License](#).

THE SOFTWARE IS PROVIDED "AS IS", WITHOUT WARRANTY OF ANY KIND, EXPRESS OR IMPLIED, INCLUDING BUT NOT LIMITED TO THE WARRANTIES OF MERCHANTABILITY, FITNESS FOR A PARTICULAR PURPOSE AND NONINFRINGEMENT. IN NO EVENT SHALL THE AUTHORS OR COPYRIGHT HOLDERS BE LIABLE FOR ANY CLAIM, DAMAGES OR OTHER LIABILITY, WHETHER IN AN ACTION OF CONTRACT, TORT OR OTHERWISE, ARISING FROM, OUT OF OR IN CONNECTION WITH THE SOFTWARE OR THE USE OR OTHER DEALINGS IN THE SOFTWARE.

Apache Derby License

fs.factory makes use of [Apache Derby](#) to provide the library function, which is issued under the [Apache 2.0 License](#).

Apache Log4J License

fs.factory makes use of [Apache Log4J](#) to provide logging services, which is issued under the [Apache 2.0 License](#).

Dom4J License

fs.factory makes use of [Dom4J](#) to provide XML services, which is issued under the [Maplesoft Dom4J License](#).

THIS SOFTWARE IS PROVIDED BY METASTUFF, LTD. AND CONTRIBUTORS "AS IS" AND ANY EXPRESSED OR IMPLIED WARRANTIES, INCLUDING, BUT NOT LIMITED TO, THE IMPLIED WARRANTIES OF MERCHANTABILITY AND FITNESS FOR A PARTICULAR PURPOSE ARE DISCLAIMED. IN NO EVENT SHALL METASTUFF, LTD. OR ITS CONTRIBUTORS BE LIABLE FOR ANY DIRECT, INDIRECT, INCIDENTAL, SPECIAL, EXEMPLARY, OR CONSEQUENTIAL DAMAGES (INCLUDING, BUT NOT LIMITED TO, PROCUREMENT OF SUBSTITUTE GOODS OR SERVICES; LOSS OF USE, DATA, OR PROFITS; OR BUSINESS INTERRUPTION) HOWEVER CAUSED AND ON ANY THEORY OF LIABILITY, WHETHER IN CONTRACT, STRICT LIABILITY, OR TORT (INCLUDING NEGLIGENCE OR OTHERWISE) ARISING IN ANY WAY OUT OF THE USE OF THIS SOFTWARE, EVEN IF ADVISED OF THE POSSIBILITY OF SUCH DAMAGE.

Java Wizard License

The fs.factory Library Batch Importer makes use of the [Java Wizard Project](#) which is distributed under the [Open Source Initiative Common Development and Distribution License](#).

I have adapted the Wizard software to allow me to display two progress bars in the Wizard. If anybody wishes to have the source code for how I did this, please email me at supportx@xfactory-librarians.co.uk and I will happily provide the adapted source code.

fs.factory License

The unregistered version of fs.factory allows you to evaluate the features of the program, which are fully functional except the File Save, MIDI Export and Librarian features.

However, fs.factory cannot be included as part of a commercial distribution or on other web sites without the express permission of the Author. I am happy for you to provide links to www.xfactory-librarians.co.uk, to maximise public access to fs.factory.

fs.factory license files are issued to users who have registered fs.factory, to gain access to the File Save, MIDI Export and Librarian features. If you have been issued with a license key you are not allowed to distribute a license key to other users. Please respect this, and the amount effort I have put into making this application.

You are permitted to install and activate fs.factory on two computers, for which the license is valid.

If you wish to install and activate fs.factory on more than two computers, then an additional license can be purchased at 50% of the cost of the main license.

The Author retains the copyright on the program and all of its originally developed features.

Disclaimer

Like all software products, this software is provided "AS IS", and without any warranties expressed or implied. But hey, remember, you're getting it for a very low cost!

I have worked hard to ensure this software works correctly, as I certainly don't want it trashing my data. However, I cannot be held liable for any problems arising as a consequence of you using this software on your computer and your data. You use this product at your risk.

Like all new products, please proceed and evaluate with care, and ensure that all your important data files are backed up before installation and evaluation.

Having gotten that out of the way, if you do encounter any problems, please submit a bug report to support@xfactory-librarians.co.uk, and I will endeavour to provide a fix for any reported problems.

Licensing Conditions for 3rd party software

Apache Derby License

fs.factory makes use of [Apache Derby](#) to provide the library function, which is issued under the [Apache 2.0 License](#).

Apache Log4J License

fs.factory makes use of [Apache Log4J](#) to provide logging services, which is issued under the [Apache 2.0 License](#).

CoreMIDI4J License

fs.factory makes use of [CoreMIDI4J](#) to provide MIDI support on OS X, which is issued under the [EPL 1.0 License](#).

Dom4J License

fs.factory makes use of [Dom4J](#) to provide XML services, which is issued under the [Maplesoft Dom4J License](#).

THIS SOFTWARE IS PROVIDED BY METASTUFF, LTD. AND CONTRIBUTORS ``AS IS" AND ANY EXPRESSED OR IMPLIED WARRANTIES, INCLUDING, BUT NOT LIMITED TO, THE IMPLIED WARRANTIES OF MERCHANTABILITY AND FITNESS FOR A PARTICULAR PURPOSE ARE DISCLAIMED. IN NO EVENT SHALL METASTUFF, LTD. OR ITS CONTRIBUTORS BE LIABLE FOR ANY DIRECT, INDIRECT, INCIDENTAL, SPECIAL, EXEMPLARY, OR CONSEQUENTIAL DAMAGES (INCLUDING, BUT NOT LIMITED TO, PROCUREMENT OF SUBSTITUTE GOODS OR SERVICES; LOSS OF USE, DATA, OR PROFITS; OR BUSINESS INTERRUPTION) HOWEVER CAUSED AND ON ANY THEORY OF LIABILITY, WHETHER IN CONTRACT, STRICT LIABILITY, OR TORT (INCLUDING NEGLIGENCE OR OTHERWISE) ARISING IN ANY WAY OUT OF THE USE OF THIS SOFTWARE, EVEN IF ADVISED OF THE POSSIBILITY OF SUCH DAMAGE.

Java Wizard License

The fs.factory Library Batch Importer makes use of the [Java Wizard Project](#) which is distributed under the [Open Source Initiative Common Development and Distribution License](#).

Table Filter License

fs.factory makes use of [TableFilter](#) by [Luis M. Pena](#), which is issued under the [MIT License](#).

THE SOFTWARE IS PROVIDED "AS IS", WITHOUT WARRANTY OF ANY KIND, EXPRESS OR IMPLIED, INCLUDING BUT NOT LIMITED TO THE WARRANTIES OF MERCHANTABILITY, FITNESS FOR A PARTICULAR PURPOSE AND NONINFRINGEMENT. IN NO EVENT SHALL THE AUTHORS OR COPYRIGHT HOLDERS BE LIABLE FOR ANY CLAIM, DAMAGES OR OTHER LIABILITY, WHETHER IN AN ACTION OF CONTRACT, TORT OR OTHERWISE, ARISING FROM, OUT OF OR IN CONNECTION WITH THE SOFTWARE OR THE USE OR OTHER DEALINGS IN THE SOFTWARE.

Tritonus License

fs.factory makes use of [Tritonus Java Sound Extensions](#), which is issued under the [GNU Lesser General Public License](#).